

Northeast District Office
121 S.W. 21st Street
Topeka, KS 66612-1429



phone: 785-296-3881
fax: 785-296-3720
www.ksdot.org

Julie Lorenz, Secretary

Laura Kelly, Governor

IMMEDIATE RELEASE

Oct. 16, 2020

For more information:

Kelly Kultala

(785) 207-0715

Kelly.Kultala@ks.gov

Mill and overlay project in Douglas County to begin Tuesday

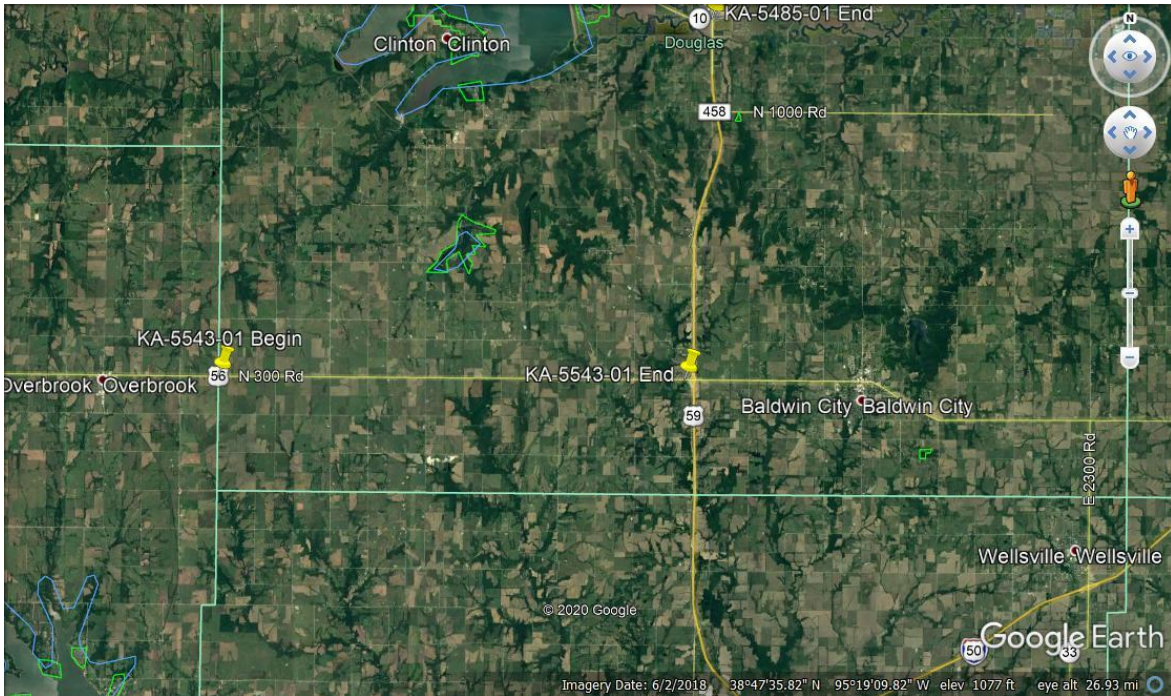
A mill and overlay project on U.S. 56 in Douglas County, to begin Tuesday, Oct. 20 and expected completion is late November, weather permitting.

The project will begin at the Osage/Douglas County line and proceed east from mile marker 415 to mile marker 428.

Work will occur during daylight hours. Traffic will be controlled using flaggers and a pilot car operation and motorists should expect delays of up to 15 minutes.

Hamm Inc. of Perry is the contractor on the \$1.4 million project.

KDOT urges all motorists to be alert and obey the warning signs when approaching and driving through a highway work zone. To stay aware of all road construction projects across Kansas go to www.kandrive.org or call 5-1-1. Drive safely and always wear your seat belt.



###

This information can be made available in alternative accessible formats upon request. For information about obtaining an alternative format, contact the KDOT Office of Public Affairs, 700 SW Harrison St., 2nd Fl West, Topeka, KS 66603-3754 or phone 785-296-3585 (Voice)/Hearing Impaired – 711.

Click below to connect to KDOT's Social Networks:

