

Northeast District Office
121 S.W. 21st Street
Topeka, KS 66612-1429



phone: 785-296-3881
fax: 785-296-3720
www.ksdot.org

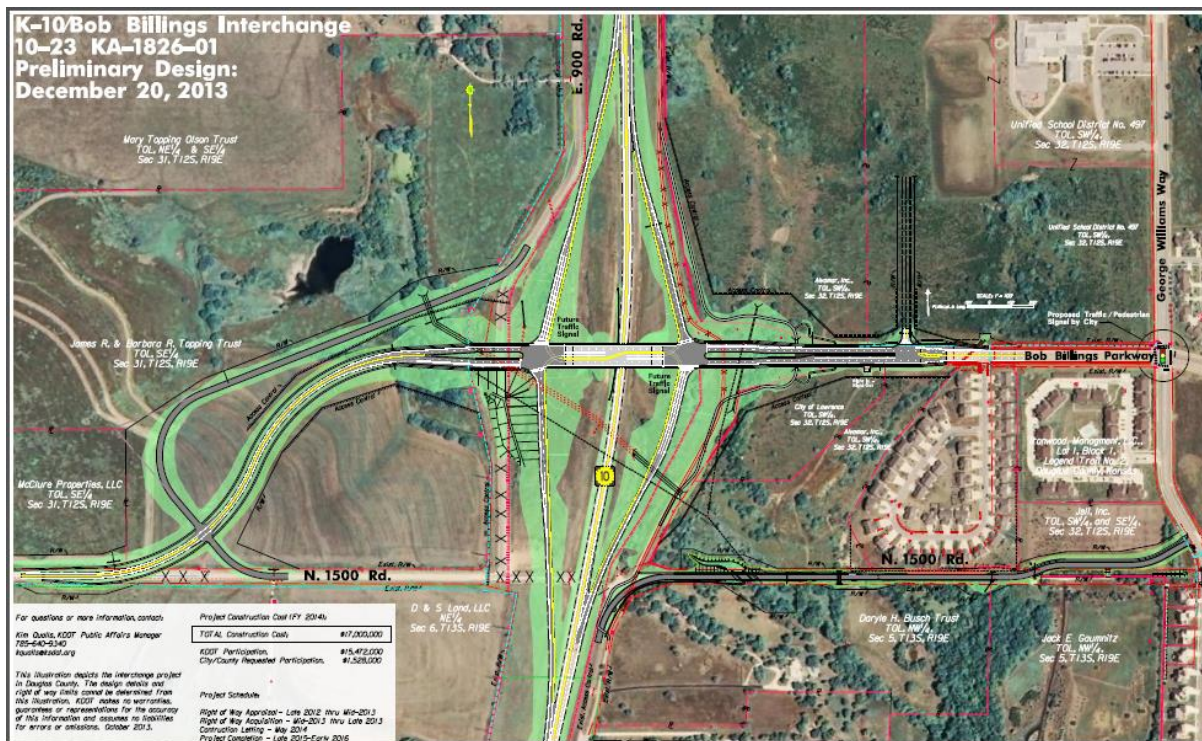
Mike King, Secretary

Sam Brownback, Governor

FOR IMMEDIATE RELEASE

July 25, 2014

News Contact: Kimberly Qualls, (785) 640-9340 or kqualls@ksdot.org
Jerod Kelley, (785) 842-0299 or jeord@ksdot.org



New K-10 & Bob Billings Parkway Interchange Project to Begin in Lawrence

On **Monday, July 28**, a project will begin to construct a new diamond interchange at K-10 and Bob Billings Parkway/15th Street in Lawrence (Douglas County). Work will take place during daylight hours, Monday through Friday, with some occasional Saturday work.

Starting on **Monday, July 28**, crews will begin setting traffic control for the project. Early project work will include clearing vegetation in preparation for grading work that will take place adjacent to K-10 for the new interchange. There will be minimal to no traffic impacts with this first phase as work is taking place off the existing roadway.

There will be minor adjacent roadway closures as project work progresses. Advance separate notification will be sent out for these traffic impacts that will affect the traveling public.

An aerial map of the new K-10 and Bob Billings Parkway/15th Street diamond interchange can be found online at: <http://www.ksdot.org/bureaus/TopekaMetro/press.asp>.

Updated traffic information for the interchange project can be viewed online at: www.ksdot.org/topekametro/laneclose.asp.

The Kansas Department of Transportation urges all motorists to be alert, obey the warning signs, and “Give ‘Em a Brake!” when approaching and driving through the project work zone.

Hamm Inc. (Perry, KS) is the primary contractor on this new interchange project with a total contract cost of \$18.228 million. **The overall scheduled completion date for the project is early November 2015.**

This project is funded by T-WORKS, the transportation program passed by the Kansas Legislature in May 2010. Find out more about this and other T-WORKS projects at: <http://kdotapp.ksdot.org/TWorks/>.

For more information on this interchange project, please contact Kimberly Qualls, Northeast Kansas Public Affairs Manager, at (785) 640-9340, or Jerod Kelley, Construction Engineer, at (785) 842-0299. (*KDOT Project #10-23 KA 1826-01*)

###

This information is available in alternative accessible formats. To obtain an alternative format, contact KDOT Transportation Information, Eisenhower Building, 700 SW Harrison, 2nd Floor West, Topeka, Kan., 66603-3754, or (785) 296-3585 (Voice)/Hearing Impaired - 711.

Click below to connect to NE Kansas KDOT's Social Networks:

