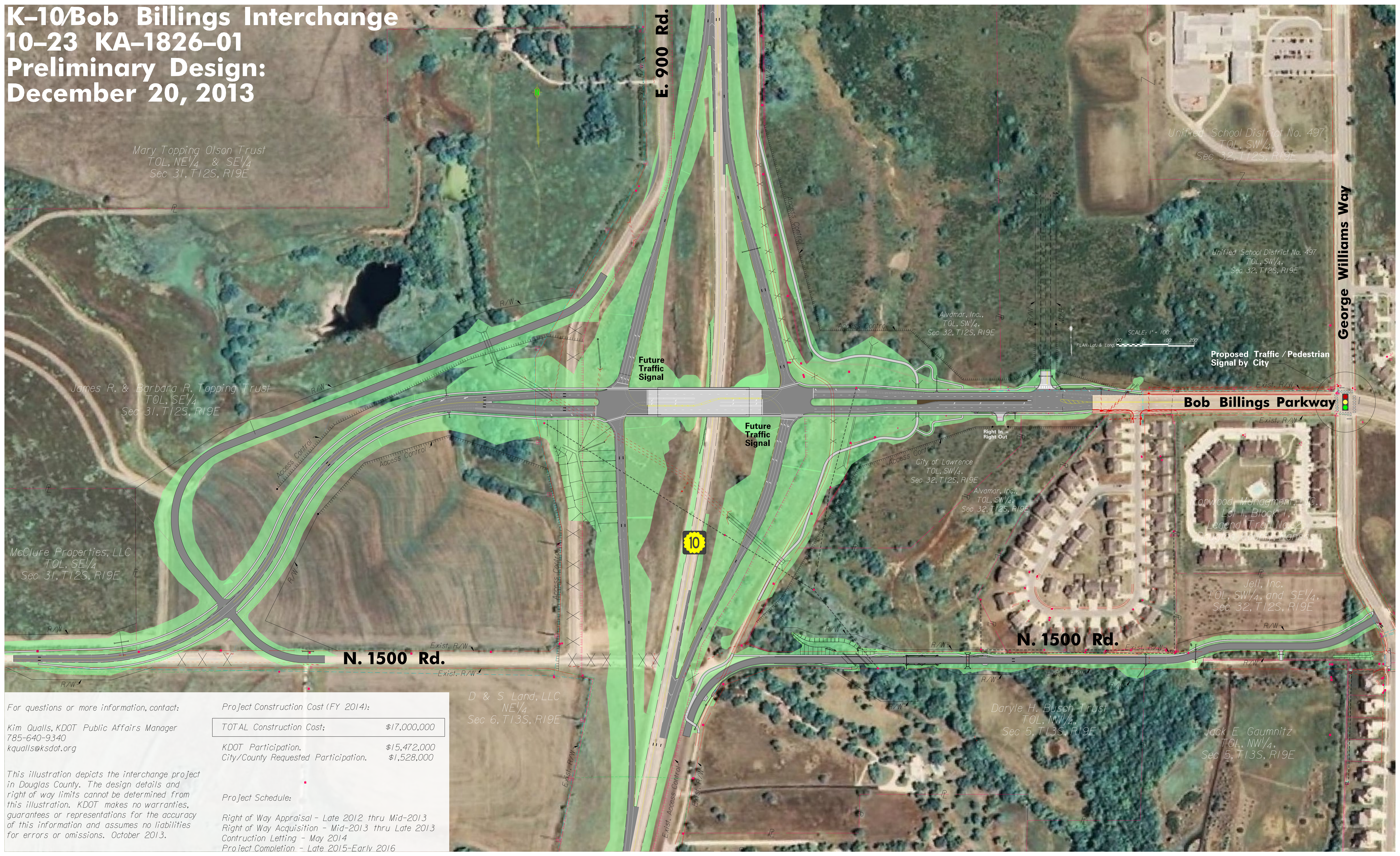


K-10/Bob Billings Interchange

10-23 KA-1826-01

Preliminary Design:

December 20, 2013



Mary Topping Olson Trust
TOL, NE¹/₄ & SE¹/₄
Sec 31, T12S, R19E

Unified School District No. 497
TOL, SW¹/₄,
Sec 32, T12S, R19E

Unified School District No. 497
TOL, SW¹/₄,
Sec 32, T12S, R19E

Alvamar, Inc.,
TOL, SW¹/₄,
Sec 32, T12S, R19E

SCALE: 1" = 100'
PLAN: Lat. & Long.

Proposed Traffic / Pedestrian
Signal by City

James R. & Barbara R. Topping Trust
TOL, SE¹/₄
Sec 31, T12S, R19E

Bob Billings Parkway

McClure Properties, LLC
TOL, SE¹/₄
Sec 31, T12S, R19E

City of Lawrence
TOL, SW¹/₄,
Sec 32, T12S, R19E

Alvamar, Inc.,
TOL, SW¹/₄,
Sec 32, T12S, R19E

Conwood Management, LLC,
Lot 1, Block 1,
Legend Trail No. 2,
Douglas County, Kansas

Jell, Inc.
TOL, SW¹/₄, and SE¹/₄,
Sec 32, T12S, R19E

N. 1500 Rd.

N. 1500 Rd.

D & S Land, LLC
NE¹/₄
Sec 6, T13S, R19E

Daryle H. Busch Trust
TOL, NW¹/₄,
Sec 5, T13S, R19E

Jack E. Gaumnitz
TOL, NW¹/₄,
Sec 5, T13S, R19E

For questions or more information, contact:

Kim Qualls, KDOT Public Affairs Manager
785-640-9340
kqualls@ksdot.org

Project Construction Cost (FY 2014):

| | |
|--------------------------------------|--------------|
| TOTAL Construction Cost; | \$17,000,000 |
| KDOT Participation. | \$15,472,000 |
| City/County Requested Participation. | \$1,528,000 |

Project Schedule:

Right of Way Appraisal - Late 2012 thru Mid-2013
Right of Way Acquisition - Mid-2013 thru Late 2013
Construction Letting - May 2014
Project Completion - Late 2015-Early 2016

This illustration depicts the interchange project in Douglas County. The design details and right of way limits cannot be determined from this illustration. KDOT makes no warranties, guarantees or representations for the accuracy of this information and assumes no liabilities for errors or omissions. October 2013.