

# TRAFFIC ALERT

## FOR IMMEDIATE RELEASE

July 29, 2014

News Contact: Kimberly Qualls, (785) 640-9340 or [kqualls@ksdot.org](mailto:kqualls@ksdot.org)



*View of Relocated Haskell Avenue from the north end between 27th and 28th Streets looking to the south.*

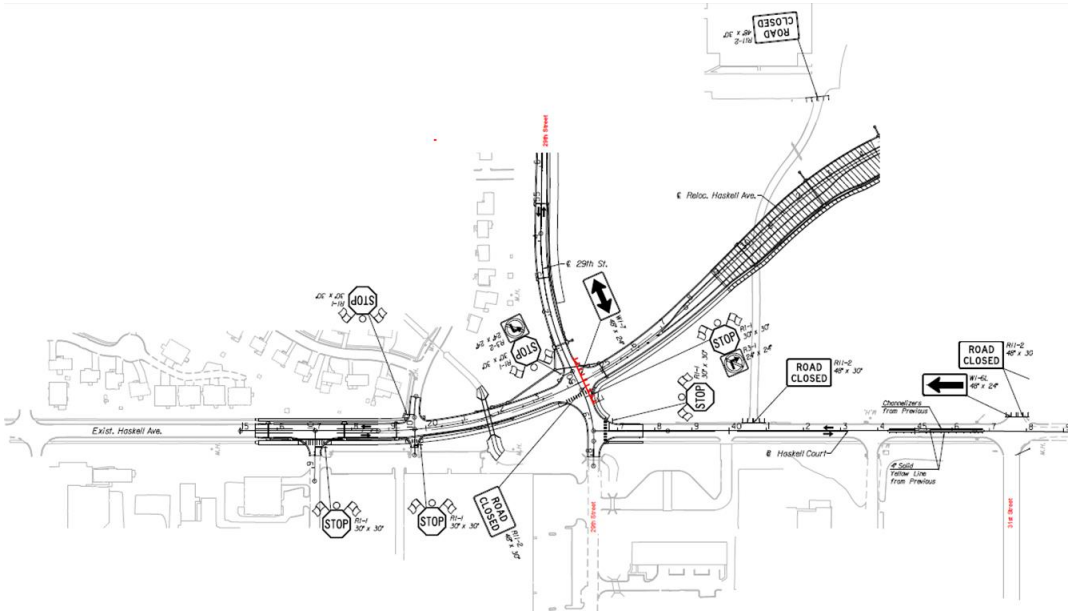
## K-10 South Lawrence Trafficway Project-Related Roadway Traffic Information

### < HASKELL AVENUE >

**TRAFFIC SHIFT:** Northbound and southbound Haskell Avenue from 27th Street to 31st Street will be **REOPENED** to traffic with the following traffic restrictions in Lawrence (Douglas County) on **Monday, August 4 at 9:00 a.m.**, weather permitting.

**Southbound traffic on Relocated Haskell Avenue** must turn right (west) onto 29th Street, then left (south) onto existing Haskell Avenue. **Northbound traffic on existing Haskell Avenue** must turn right (east) onto 29th Street, then left (north) onto relocated Haskell Avenue. HiPer Technology's existing business entrance off of existing Haskell Avenue will be closed, and the new business entrance for HiPer Technology will be on the east end of 29<sup>th</sup> Street.

## Haskell Avenue Traffic Switch Map:



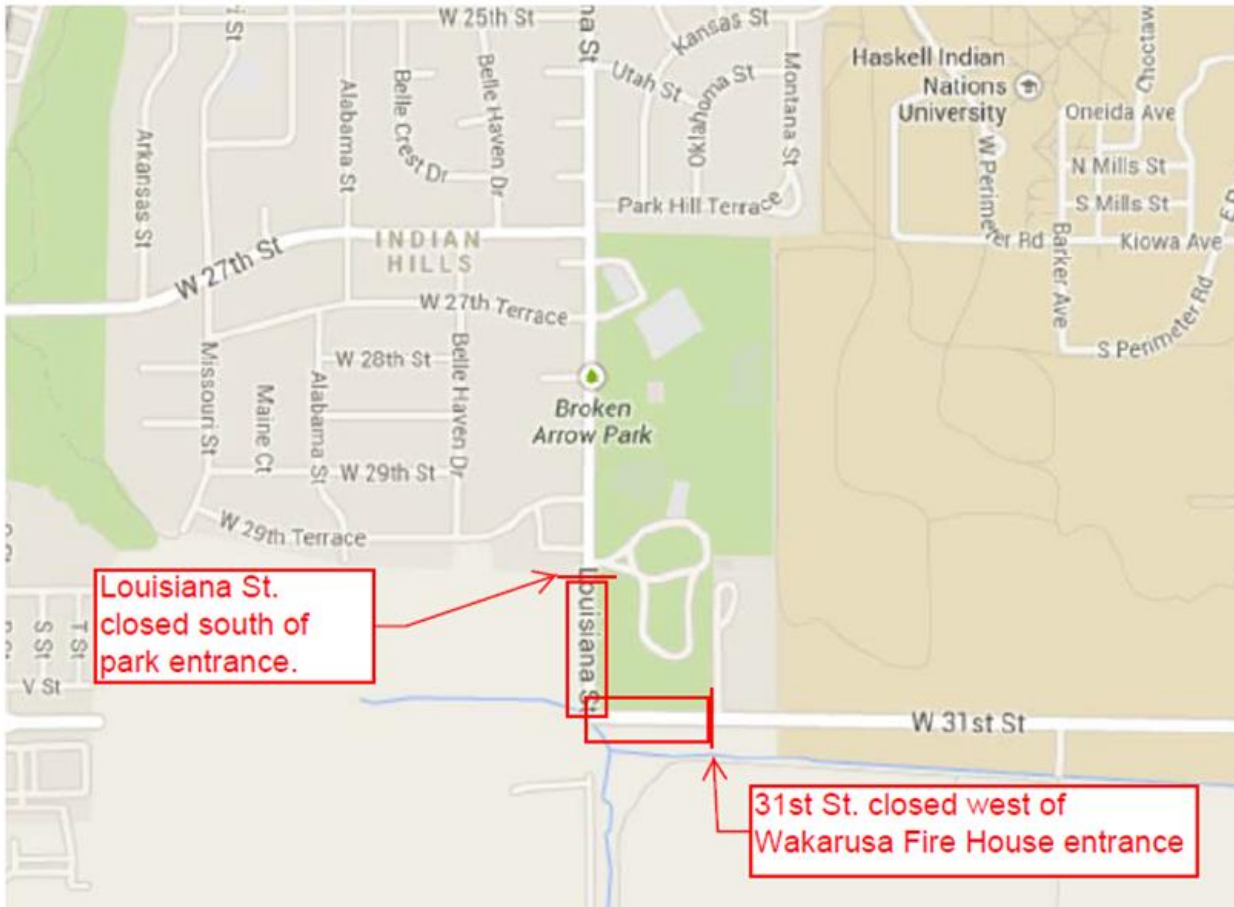
## < LOUISIANA STREET & 31st STREET >

**24/7 ROADWAY CLOSURE:** Northbound and southbound Louisiana Street south of Broken Arrow Park and eastbound and westbound 31st Street west of Wakarusa Fire Station will be **CLOSED** to all traffic in Lawrence (Douglas County) on **Monday, August 4 at NOON 12:00 p.m. through Spring 2015**, weather permitting.

This will extend the current Louisiana Street closure from Steve's Place business entrance to Broken Arrow Park entrance (including the intersection of 31st Street and Louisiana Street). The existing 31st Street closure will extend east to the Wakarusa Fire Station entrance meaning 31st Street will now be closed from Ousdahl Road to the Wakarusa Fire Station entrance.

## Louisiana Street & 31st Street Closure Map:

**Louisiana St. Closed south of Broken Arrow Park Entrance to 31<sup>st</sup> St.**



Updated traffic information for the K-10 South Lawrence Trafficway Project can be viewed online: [www.ksdot.org/topekametro/laneclose.asp](http://www.ksdot.org/topekametro/laneclose.asp). An aerial map of the new K-10 South Lawrence Trafficway, including construction phasing and traffic impacts can be found online: <http://www.ksdot.org/topekaMetro/projectstudytest.asp>.

The Kansas Department of Transportation urges all motorists to be alert, obey the warning signs, and “Give ‘Em a Brake!” when approaching and driving through the project work zone.

The overall scheduled completion date for the K-10 South Lawrence Trafficway Project is Fall 2016. (KDOT T-WORKS Project #10-23 K-8392-04)

###

This information is available in alternative accessible formats. To obtain an alternative format, contact KDOT Transportation Information, Eisenhower Building, 700 SW Harrison, 2nd Floor West, Topeka, Kan., 66603-3754, or (785) 296-3585 (Voice)/Hearing Impaired - 711.

Click below to connect to KDOT’s Social Networks:

