

Northeast District Office
121 S.W. 21st Street
Topeka, KS 66612-1429



phone: 785-296-3881
fax: 785-296-3720
www.ksdot.org

Mike King, Secretary

Sam Brownback, Governor

TRAFFIC ALERT – UPDATE!

FOR IMMEDIATE RELEASE

May 23, 2014

News Contact: Kimberly Qualls, (785) 640-9340 or kqualls@ksdot.org

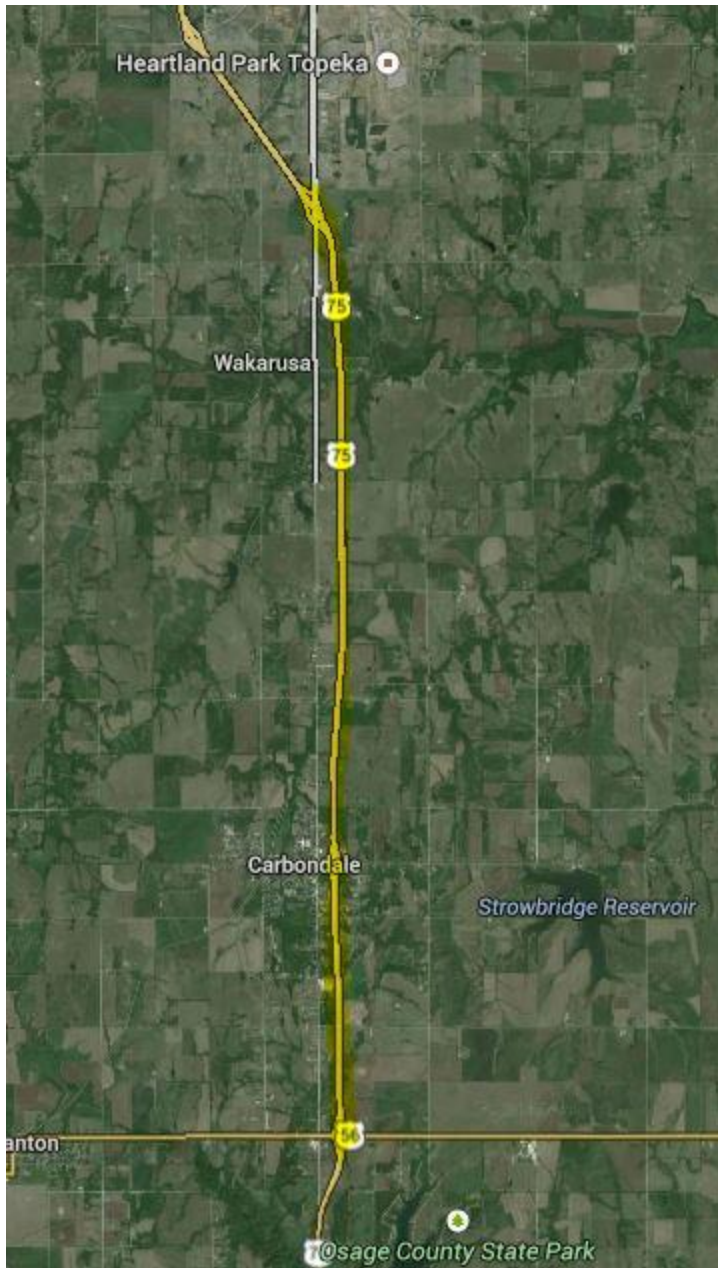
As there are a number of construction projects taking place on U.S. 75 in Shawnee and Osage Counties, this Traffic Alert provides a brief summary of each project moving north to south on U.S. 75 from Shawnee County to Osage County. News release and traffic alert information on these projects can be found online

at: <http://www.ksdot.org/topekaMetro/press.asp>. Each of the project summaries below includes an aerial map view of the project area which is highlighted in yellow. (UPDATES in blue)

Thank you for your patience as our crews work to provide a smoother roadway for your future commutes!

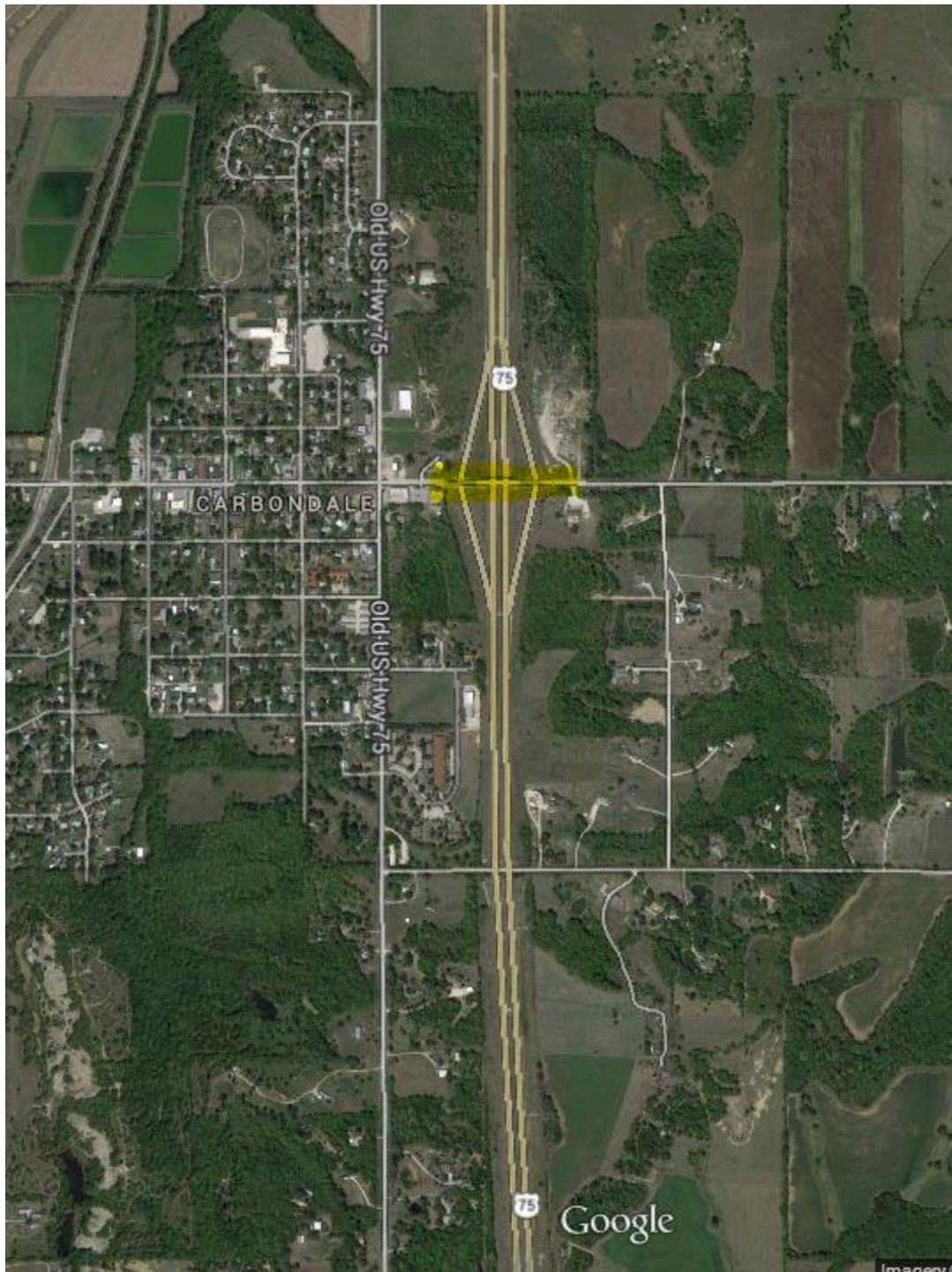
U.S. 75 from Topeka Boulevard (Shawnee County) to U.S. 56 junction (Osage County)

EXPECT MINOR DELAYS! 24/7 LANE CLOSURES: Northbound and southbound U.S. 75 from the U.S. 56 junction (Osage County) to Topeka Boulevard (Shawnee County) still reduced to ONE OPEN LANE each direction, 24/7 round the clock, for resurfacing work. Project work is scheduled to be completed in mid-July 2014.



137th Street & U.S. 75 Interchange (Osage County)

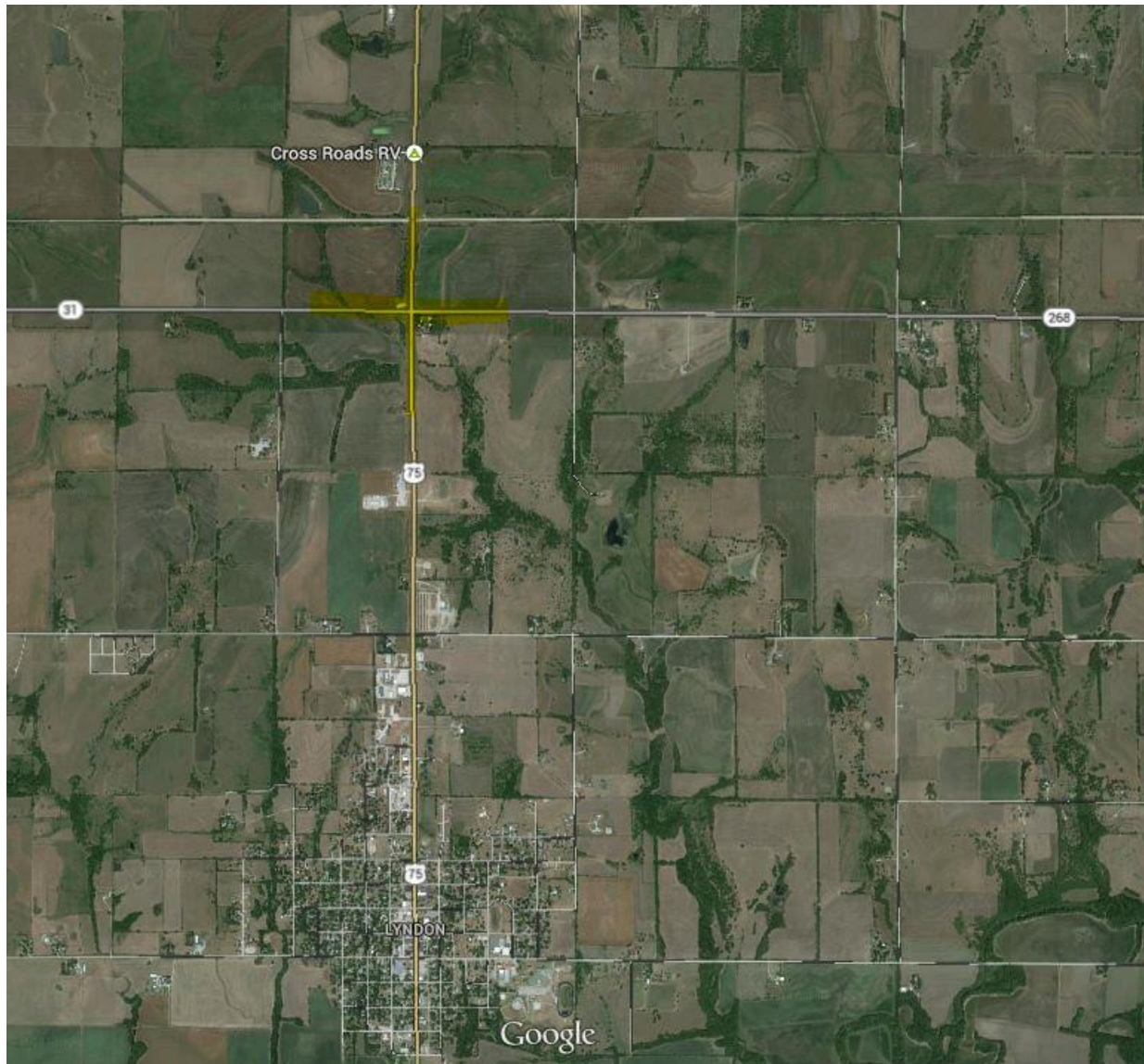
EXPECT DELAYS! 24/7 LANE RESTRICTIONS & RAMP CLOSURES: Eastbound and westbound 137th Street bridge over U.S. 75 (east of Carbondale) will be restricted to one 12-foot lane each direction for asphalt pavement approach replacement work, 24/7 round the clock, on Tuesday-Friday, April 15-May 30.. **Project work is scheduled to be completed on [Friday, May 30.](#)**



U.S. 75 & K-31/K-268 Roundabout Project (Osage County)

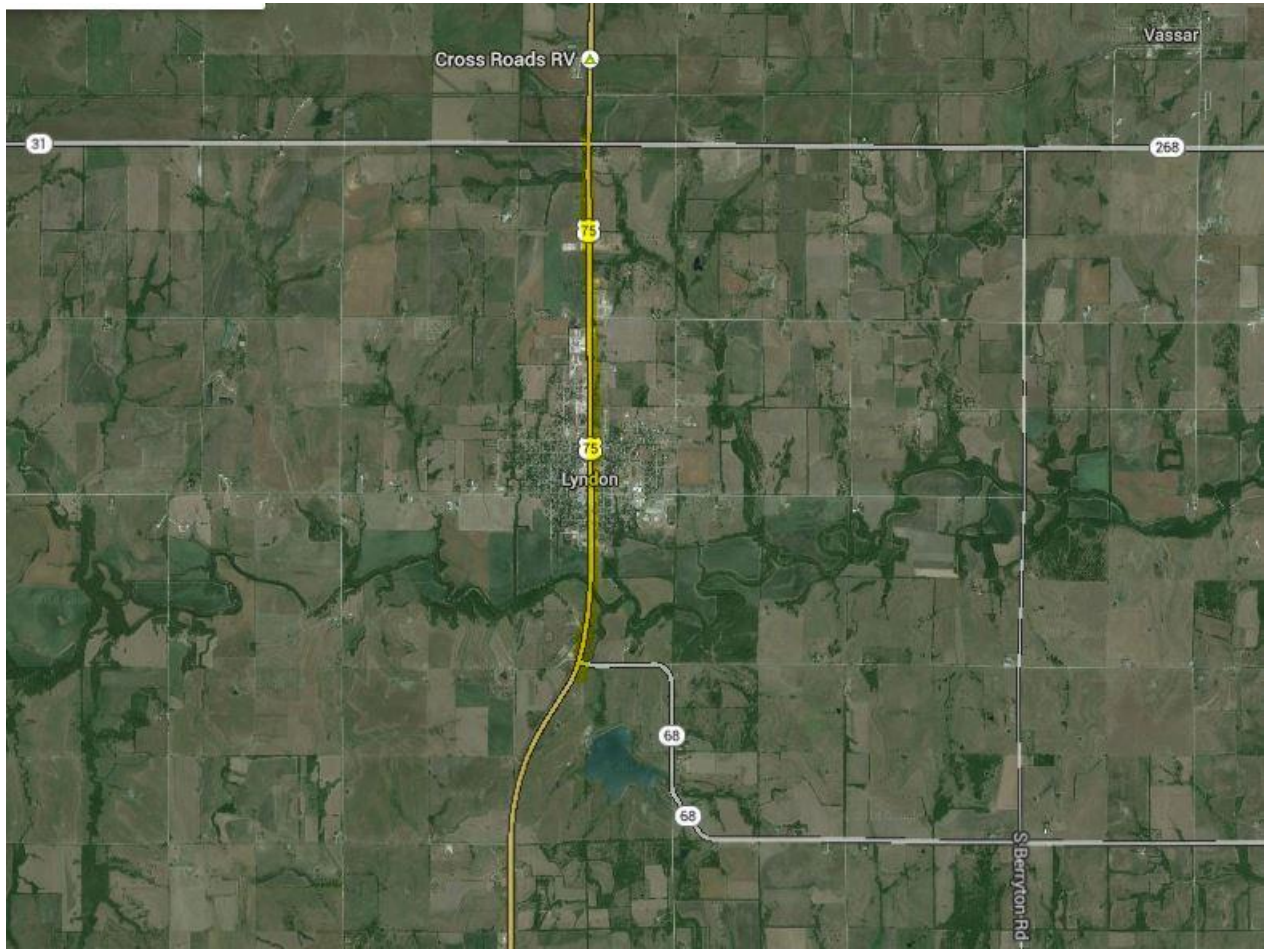
TRAFFIC SHIFT! Traffic on northbound and southbound U.S. 75 and on eastbound and westbound K-31/K-268 will be detoured onto asphalt shooflies around the existing at-grade intersection so that work may begin on the new

intersection roundabout beginning on Monday, May 5, after morning rush hour. **Project work is scheduled to be completed in early Fall 2014.**



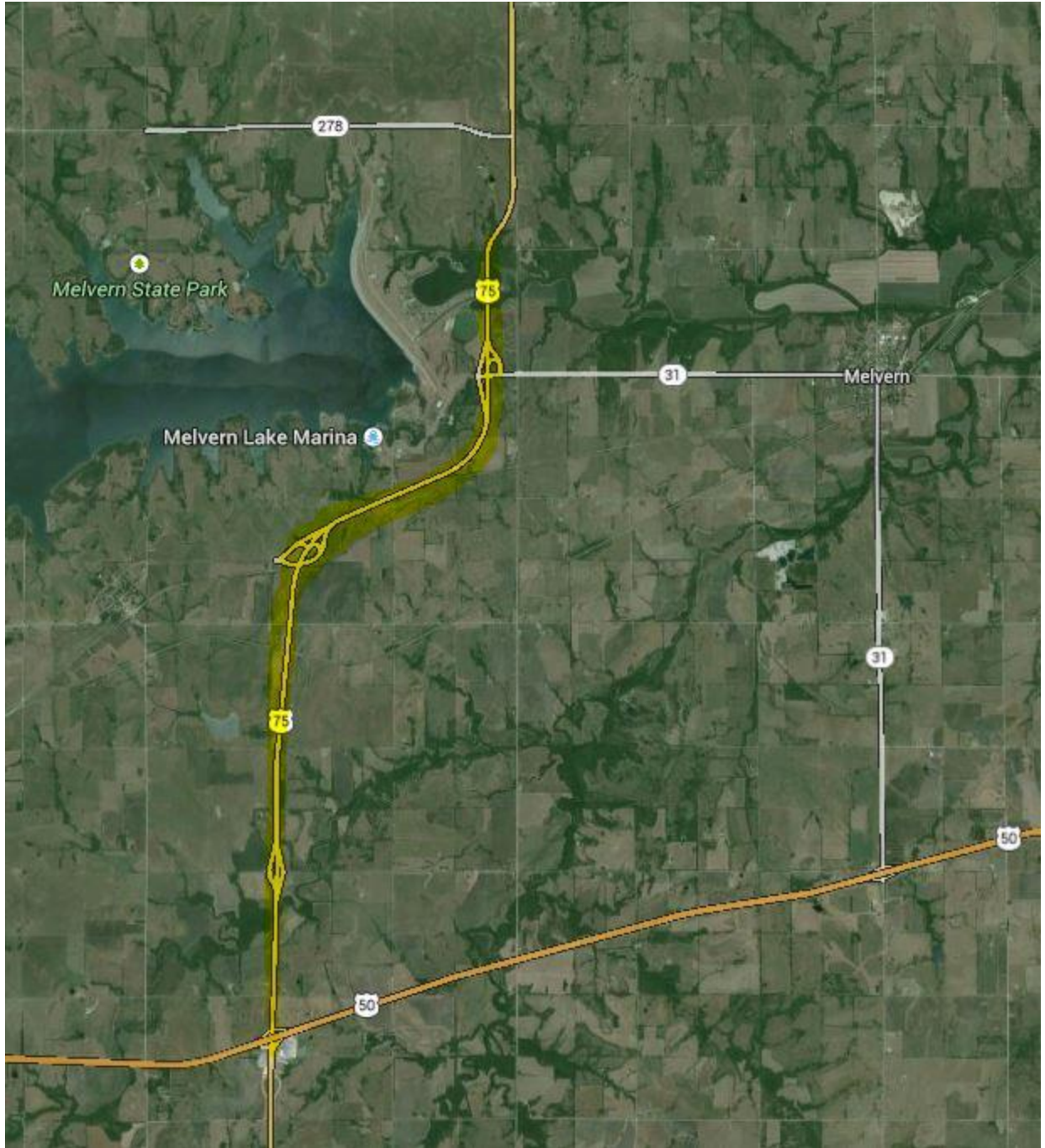
U.S. 75 from K-31/K-268 to K-68 (Osage County)

EXPECT DELAYS! LANE CLOSURES: Northbound and southbound U.S. 75 from the K-68 junction north through the city of Lyndon to the K-31/K-268 junction for resurfacing work beginning on Monday, May 5. **Project work left to complete includes a chip seal application on the shoulders and permanent pavement markings on the entire resurfaced portion of U.S. 75.** Traffic will be directed through the project work zone via a pilot car and flagger operation. **Project work is scheduled for completion in early June 2014.**



U.S. 75 from Marais Des Cygnes River Bridge to South Osage County Line (Osage County)

Northbound and southbound U.S. 75 will be reduced to one lane for both directions over one bridge at a time on the two-lane portion of U.S. 75 from the Marais des Cygnes River Bridge to the south Osage County line for bridge deck repair and overlay work beginning on **Monday, April 21**. Traffic will be directed through the project work zone via flaggers at each end of the bridge. **Project work is scheduled to be completed in late May 2014.**



The Kansas Department of Transportation urges all motorists to be alert, obey the warning signs, and “Give ‘Em a Brake!” when approaching and driving through the project work zone.

###

This information is available in alternative accessible formats. To obtain an alternative format, contact KDOT Transportation Information, Eisenhower Building, 700 SW Harrison, 2nd Floor West, Topeka, Kan., 66603-3754, or (785) 296-3585 (Voice)/Hearing Impaired - 711.

Click below to connect to KDOT's Social Networks:

