

TRAFFIC ALERT – UPDATE #2!

FOR IMMEDIATE RELEASE

January 29, 2014

News Contact: Kimberly Qualls, (785) 640-9340 or kqualls@ksdot.org

K-10 South Lawrence Trafficway Project – Haskell Avenue Closure

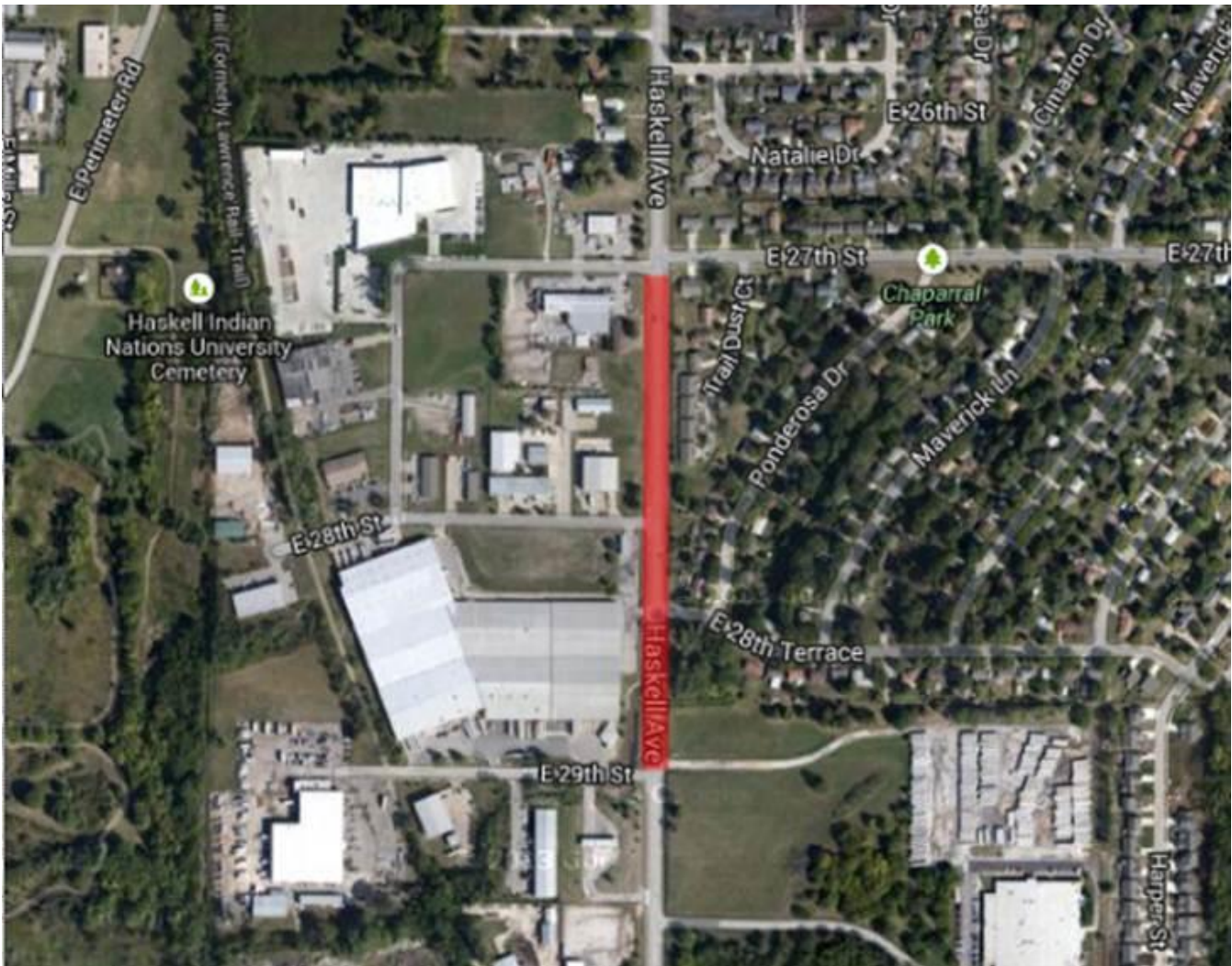
EXPECT DELAYS! 24/7 FULL ROADWAY CLOSURE: Northbound and southbound Haskell Avenue from 27th Street to 29th Street in Lawrence (Douglas County) will be CLOSED, 24/7 round the clock, for utility work, box culvert installation and reconstruction work beginning on Monday, January 27, 2014 at 7:00 a.m., through early 2015, weather permitting.

ADDITIONAL 24/7 FULL INTERSECTION CLOSURE: Beginning on **Saturday, March 1 through early 2015**, the intersection of Haskell Avenue and 29th Street will also be **CLOSED** to all traffic for reconstruction work. A detour road will be constructed on a portion of the existing Haskell Rail-Trail, located between 28th Street and 29th Street for local traffic (including semi truck traffic) to utilize for access to businesses located on 29th Street west of Haskell Avenue. See map below for the planned extended closure area of Haskell Avenue (south of 29th Street) and the detour route location.

29th & Haskell Avenue Intersection Closure and Detour Map:



Haskell Avenue Closure Map:



Updated traffic information for the K-10 South Lawrence Trafficway Project can be viewed online: www.ksdot.org/topekametro/laneclose.asp. An aerial map of the new K-10 South Lawrence Trafficway, including construction phasing and traffic impacts, can be found online at: <http://www.ksdot.org/topekaMetro/projectstudytest.asp>.

The Kansas Department of Transportation urges all motorists to be alert, obey the warning signs, and “Give ‘Em a Brake!” when approaching and driving through the project work zone.

The overall scheduled completion date for the K-10 South Lawrence Trafficway Project is Fall 2016. (KDOT T-WORKS Project #10-23 K-8392-04)

###

This information is available in alternative accessible formats. To obtain an alternative format, contact KDOT Transportation Information, Eisenhower Building, 700 SW Harrison, 2nd Floor West, Topeka, Kan., 66603-3754, or (785) 296-3585 (Voice)/Hearing Impaired - 711.

Click below to connect to KDOT’s Social Networks:

