

## TRAFFIC ALERT – UPDATE!

### FOR IMMEDIATE RELEASE

May 29, 2014, **6:45 p.m.**

News Contact: Kimberly Qualls, (785) 640-9340 or [kqualls@ksdot.org](mailto:kqualls@ksdot.org)

### **K-10 South Lawrence Trafficway Project-Related Roadway Closures**

As there are a number of construction projects taking place on the K-10 South Lawrence Trafficway Project in Lawrence (Douglas County), this Traffic Alert provides a brief summary of each project and its related traffic impacts. News release and traffic alert information on these projects can be found online at: <http://www.ksdot.org/topekaMetro/press.asp>. Each of the project-related roadway summaries below includes an aerial map view of the impacted area.

Thank you for your patience as our crews work to provide a new freeway for your future commutes!

---

### **31st Street & Louisiana Street Closures**

**EXPECT DELAYS! 24/7 FULL ROADWAY CLOSURES:** Eastbound and westbound 31st Street from Louisiana Street to approximately .25-miles west and Louisiana Street just south of 31st Street in Lawrence (Douglas County) will be **CLOSED**, 24/7 round the clock, for construction work beginning on **Tuesday, June 3, 2014 at 7:00 a.m., through summer 2015, weather permitting**. See first map below for the roadway closure locations.

The 31st Street closure is needed for the construction of a bridge size box culvert and the reconstruction/realignment of 31st Street. The Louisiana Street closure is needed for the construction of the relocated 31st Street haunched slab bridge over Naismith Creek. See second map below for reconfiguration of 31st Street and Louisiana intersection. **31st Street is expected to reopen mid-summer 2015, weather permitting and the relocated Louisiana Street is expected to open late summer 2015, weather permitting.**

**31st Street & Louisiana Street Closure Map:**



**Reconfiguration Map of 31st Street & Louisiana Street Intersection:**





## **31st Street Road Closure (E1700 Road to E1750 Road)**

**24/7 FULL ROADWAY CLOSURES:** Eastbound and westbound 31st Street from E1700 Road to E1750 Road in Lawrence (Douglas County) will be **CLOSED**, 24/7 round the clock, for box culvert construction work beginning on **Monday, December 9 at 7:00 a.m. through Spring 2015, weather permitting.**

### **31st Street Closure Map:**

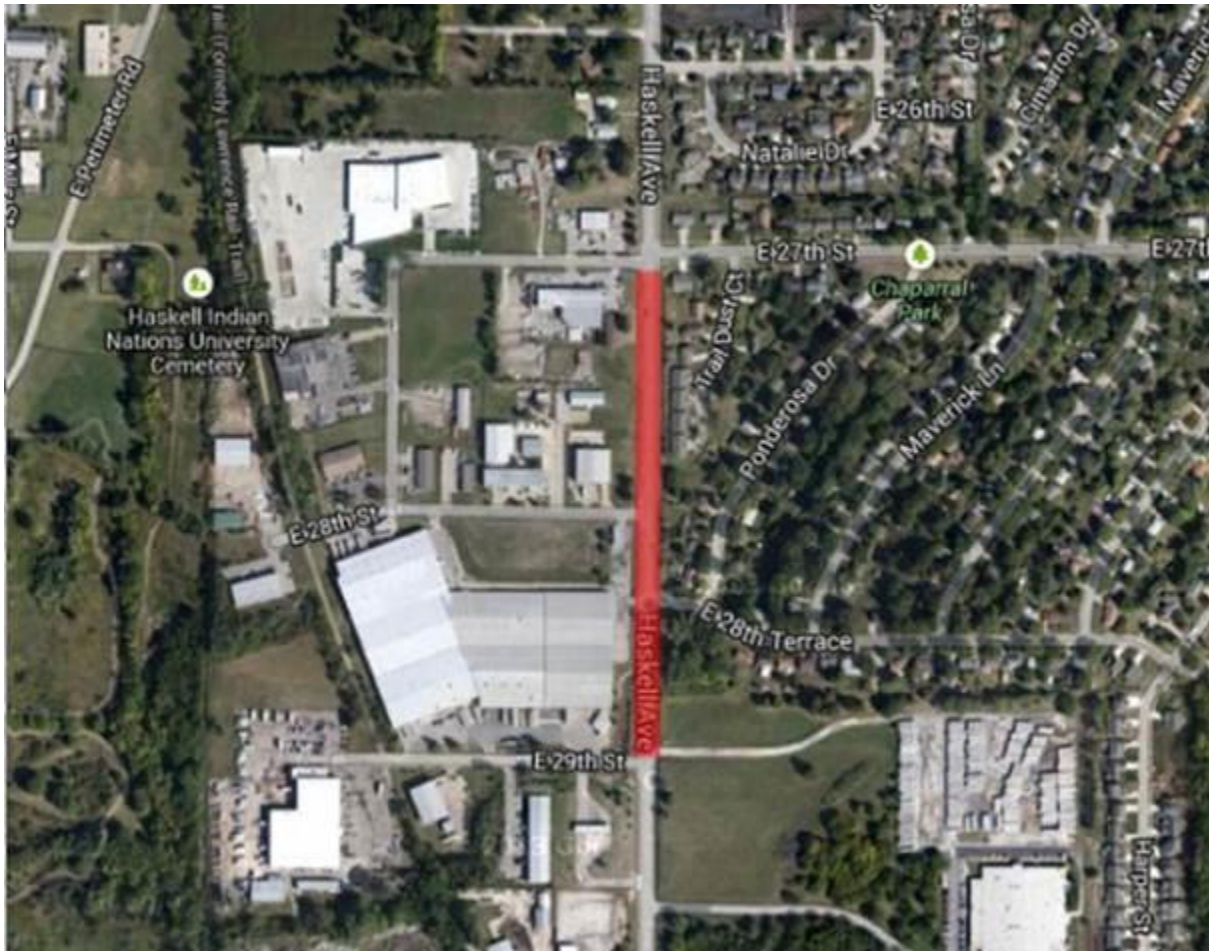


---

## **Haskell Avenue Closure**

**EXPECT DELAYS!** **24/7 FULL ROADWAY CLOSURE:** Northbound and southbound Haskell Avenue from 27th Street to 29th Street in Lawrence (Douglas County) will be **CLOSED**, 24/7 round the clock, for utility work, box culvert installation and reconstruction work beginning on **Monday, January 27, 2014 at 7:00 a.m., through early 2015, weather permitting.**

### **Haskell Avenue Closure Map:**

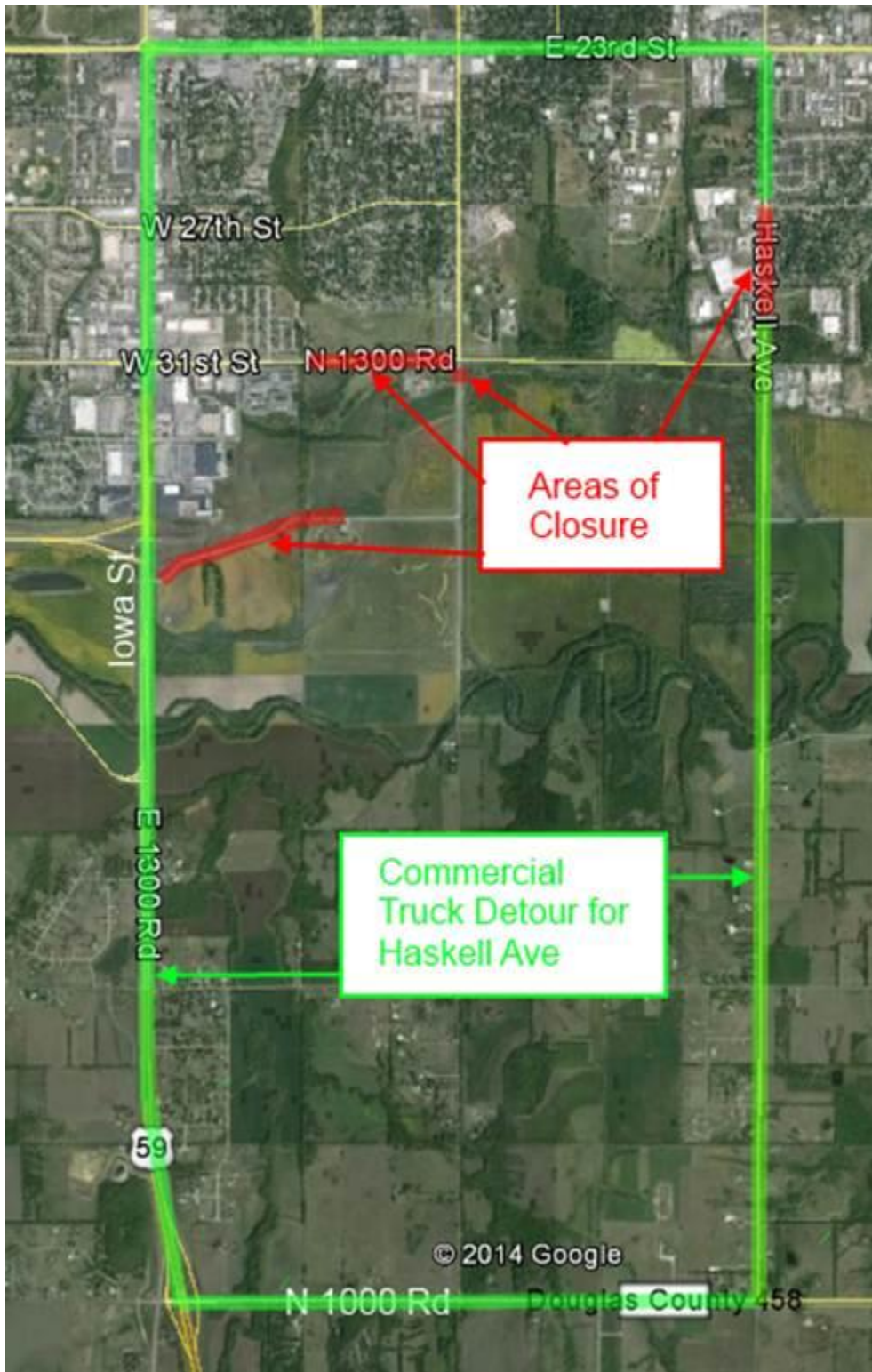


Eastbound and westbound 27th Street and 29th Street traffic movements will **remain open** at Haskell Avenue. Traffic will not be able to access Haskell Avenue from south of 27th Street to just north of 29th Street. As well there will be **no access** to Haskell Avenue from East 28th Street. See aerial map below for suggested detour route.

**Commercial Truck Traffic Suggested Detour Route: (UPDATED map below)** Commercial vehicles should utilize Iowa Street/K-10/U.S. 59 to either 23rd Street or **N1000 Road** to access Haskell Avenue from the north or south.



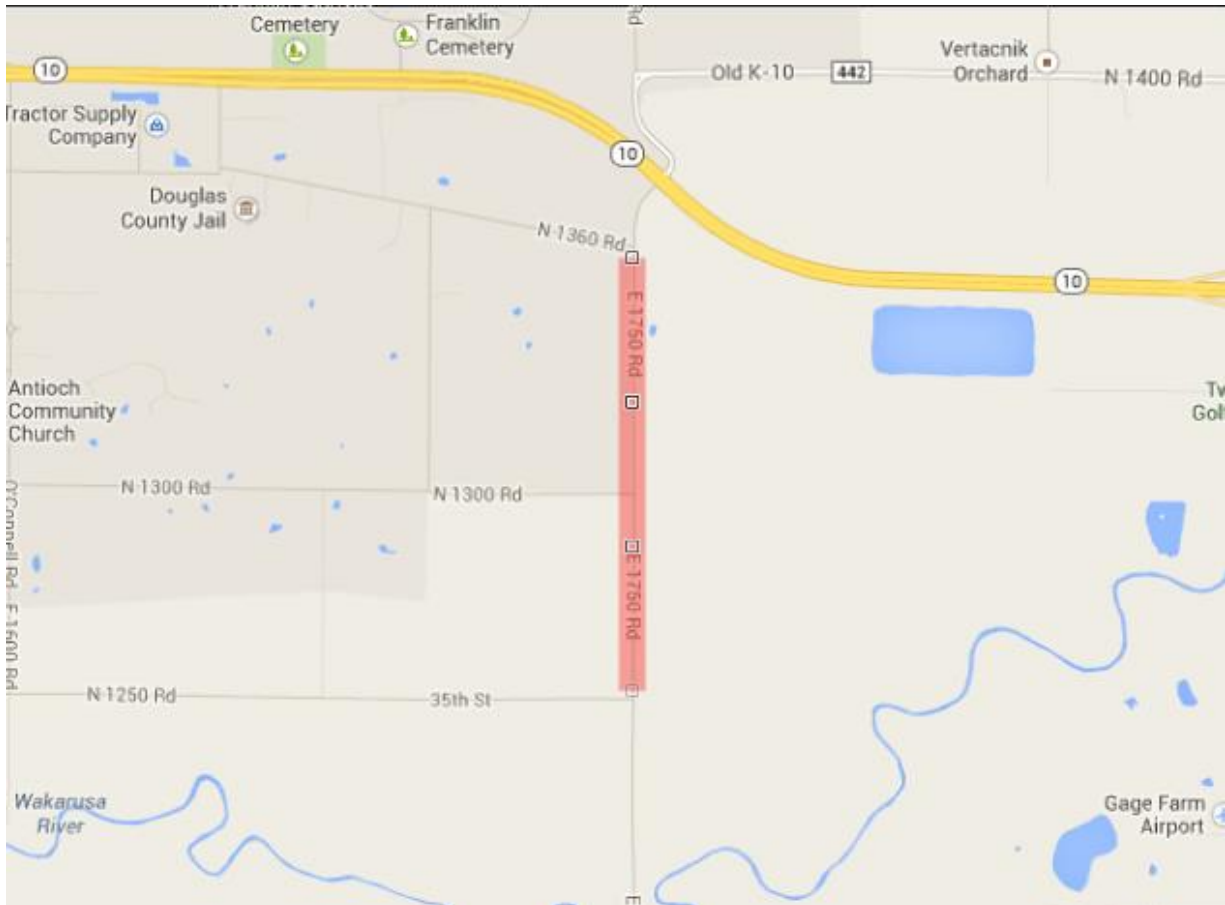
**Commercial Truck Traffic Suggested Detour Route Map:**



## **E1750 Road Closure**

**24/7 FULL ROADWAY CLOSURES:** Northbound and southbound E1750 Road from N1360 Road to 35th Street/N1250 Road in Lawrence (Douglas County) will be CLOSED, 24/7 round the clock, for bridge embankment work beginning on Monday, January 13, 2014 at 7:00 a.m. through Spring 2015, weather permitting.

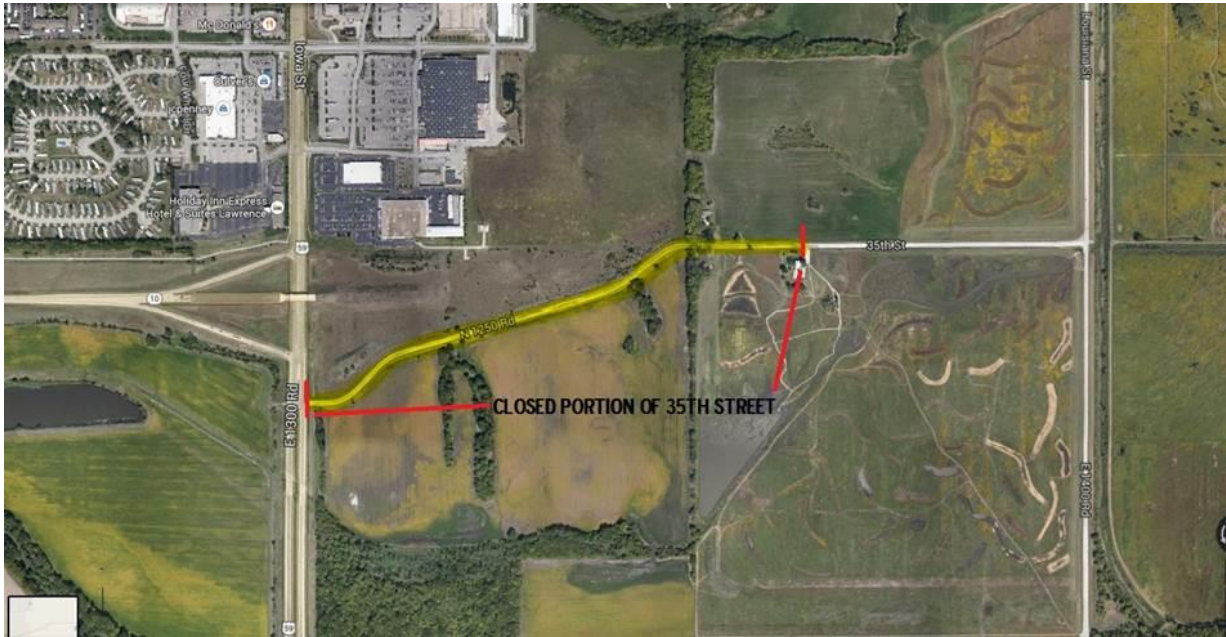
### **E1750 Road Closure Map:**



## **35th Street Closure**

**24/7 FULL ROADWAY CLOSURES:** Eastbound and westbound 35th Street from Iowa Street to the Baker Wetlands Visitor Center in Lawrence (Douglas County) will be CLOSED, 24/7 round the clock, for box culvert construction work beginning on Monday, December 9 at 7:00 a.m. through early July 2014, weather permitting.

## 35th Street Closure Map:



Updated traffic information for the K-10 South Lawrence Trafficway Project can be viewed online: [www.ksdot.org/topekametro/laneclose.asp](http://www.ksdot.org/topekametro/laneclose.asp). An aerial map of the new K-10 South Lawrence Trafficway, including construction phasing and traffic impacts, can be found online at: <http://www.ksdot.org/topekaMetro/projectstudytest.asp>.

The Kansas Department of Transportation urges all motorists to be alert, obey the warning signs, and “Give ‘Em a Brake!” when approaching and driving through the project work zone.

The overall scheduled completion date for the K-10 South Lawrence Trafficway Project is Fall 2016. (KDOT T-WORKS Project #10-23 K-8392-04)

###

This information is available in alternative accessible formats. To obtain an alternative format, contact KDOT Transportation Information, Eisenhower Building, 700 SW Harrison, 2nd Floor West, Topeka, Kan., 66603-3754, or (785) 296-3585 (Voice)/Hearing Impaired - 711.

Click below to connect to KDOT’s Social Networks:

