

# TRAFFIC ALERT **UPDATE!**

## FOR IMMEDIATE RELEASE

December 30, 2013

News Contact: Kimberly Qualls, (785) 640-9340 or [kqualls@ksdot.org](mailto:kqualls@ksdot.org)

### **K-10 South Lawrence Trafficway Project**

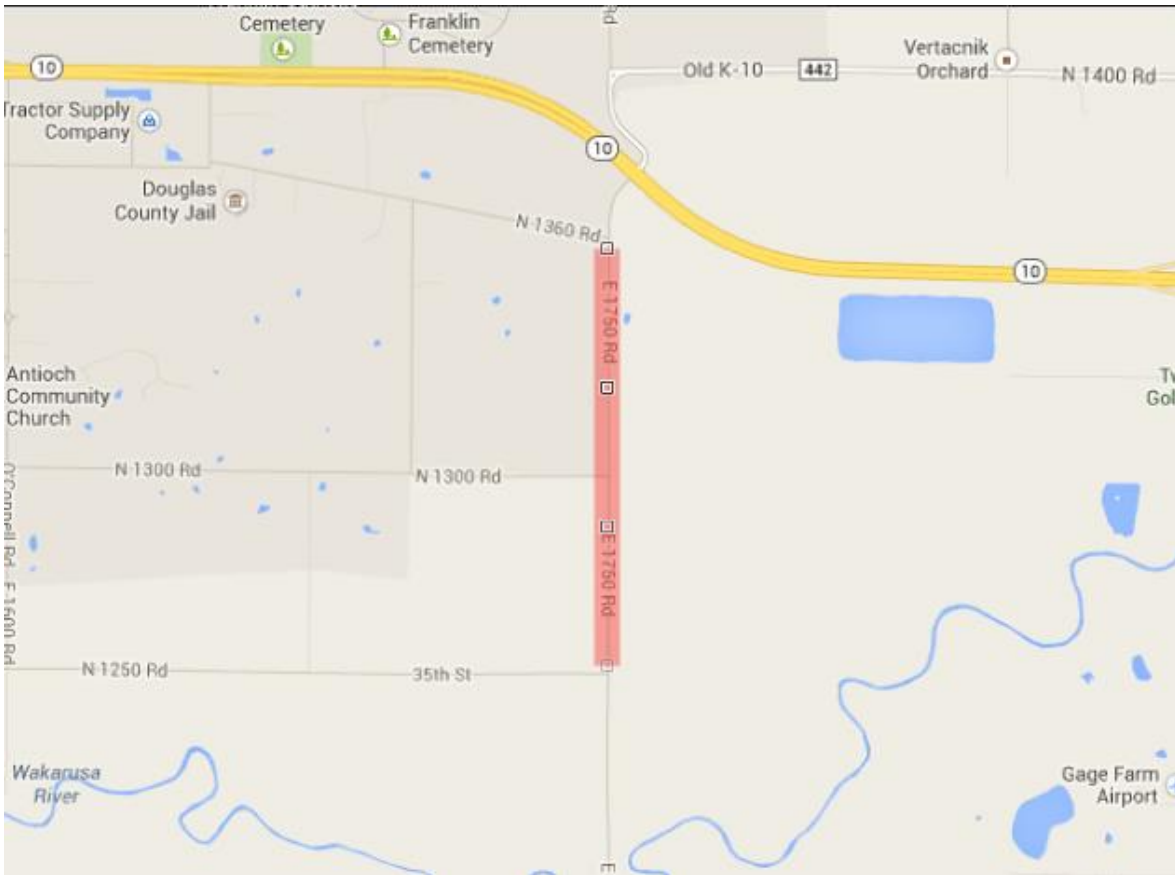
**NEW CLOSURE! 24/7 FULL ROADWAY CLOSURES:** Northbound and southbound E1750 Road from N1360 Road to 35th Street/N1250 Road in Lawrence (Douglas County) will be **CLOSED**, 24/7 round the clock, for bridge embankment work beginning on **Monday, January 13, 2014 at 7:00 a.m.**, weather permitting, through **Spring 2015**.

**UPDATED CLOSURE REOPENING! 24/7 FULL ROADWAY CLOSURES:** Eastbound and westbound 35th Street from Iowa Street to the Baker Wetlands Visitor Center and 31st Street from E1700 Road to E1750 Road in Lawrence (Douglas County) will be **CLOSED**, 24/7 round the clock, for box culvert construction work beginning on **Monday, December 9 at 7:00 a.m.**, weather permitting, through **mid-May 2014**.

**UPDATED CLOSURE REOPENING! 24/7 FULL ROADWAY CLOSURES:** Eastbound and westbound 31st Street from E1700 Road to E1750 Road in Lawrence (Douglas County) will be **CLOSED**, 24/7 round the clock, for box culvert construction work beginning on **Monday, December 9 at 7:00 a.m.**, weather permitting, through **Spring 2015**.

No marked detours will be provided. Drivers should expect minor delays and must use alternate routes during the roadway closures. See aerial maps below for roadway closure locations.

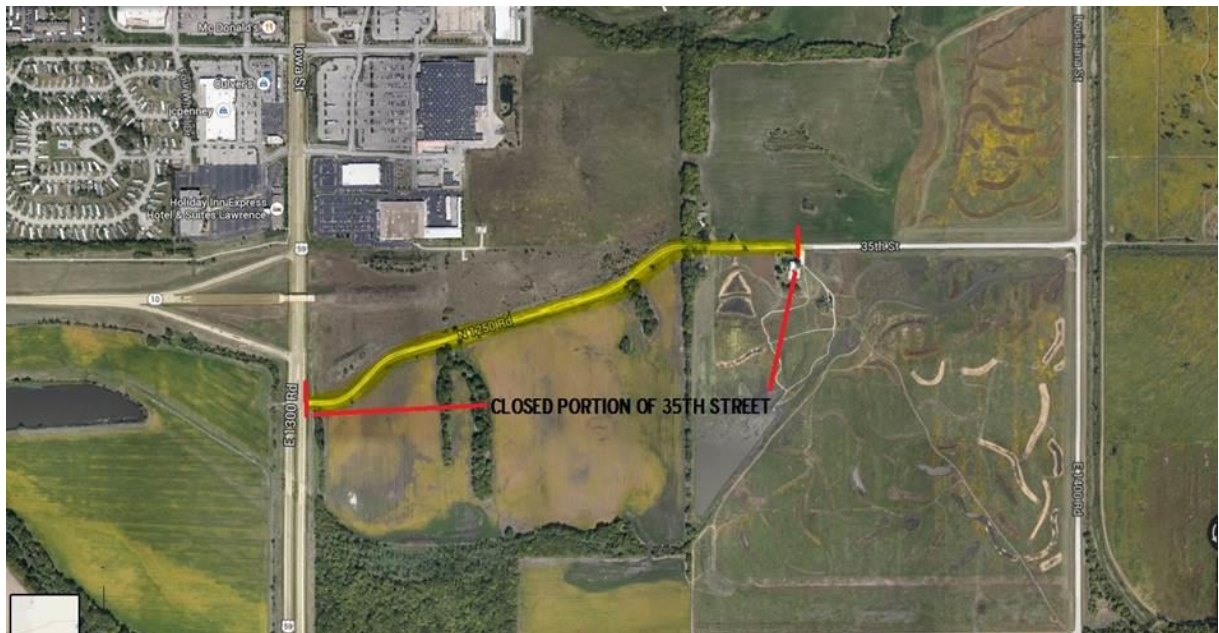
## E1750 ROAD CLOSURE MAP:



## 31ST STREET CLOSURE MAP:



## 35TH STREET CLOSURE MAP:



Updated traffic information for the K-10 South Lawrence Trafficway Project can be viewed online: [www.ksdot.org/topekametro/laneclose.asp](http://www.ksdot.org/topekametro/laneclose.asp). An aerial map of the new K-10 South Lawrence Trafficway, including construction phasing and traffic impacts, can be found online at: <http://www.ksdot.org/topekaMetro/projectstudytest.asp>.

The Kansas Department of Transportation urges all motorists to be alert, obey the warning signs, and “Give ‘Em a Brake!” when approaching and driving through the project work zone.

**The overall scheduled completion date for the K-10 South Lawrence Trafficway Project is Fall 2016.** (KDOT T-WORKS Project #10-23 K-8392-04)

###

This information is available in alternative accessible formats. To obtain an alternative format, contact KDOT Transportation Information, Eisenhower Building, 700 SW Harrison, 2nd Floor West, Topeka, Kan., 66603-3754, or (785) 296-3585 (Voice)/Hearing Impaired - 711.

Click below to connect to KDOT's Social Networks:

