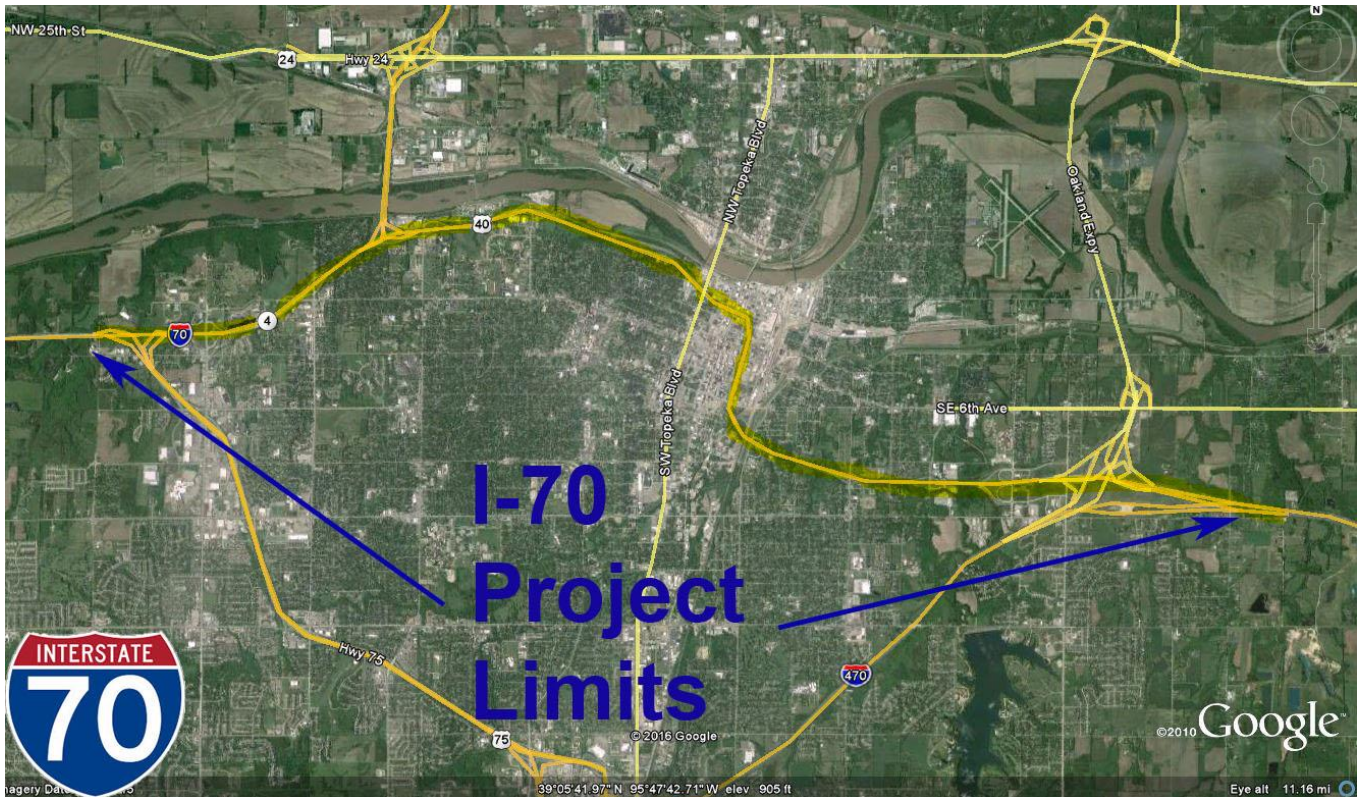


**FOR IMMEDIATE RELEASE**

March 10, 2016

News Contact: Kimberly Qualls, (785) 640-9340 or [kqualls@ksdot.org](mailto:kqualls@ksdot.org)  
Michelle Anschutz, (785) 296-3986 or [michelle@ksdot.org](mailto:michelle@ksdot.org)



## Major I-70 Resurfacing Project to Begin in Shawnee County

On **Friday, April 15**, weather permitting, a resurfacing project will begin on a 12.62-mile section of I-70 from the Kansas Turnpike East Topeka Toll Gate to Urish Road in Topeka (Shawnee County). Project work includes spray patching of existing potholes, followed by a 3-inch asphalt overlay on all mainline lanes, and then a 5/8-inch ultra-thin bonded overlay on all mainline lanes and ramps. New pavement markings will be added once the resurfacing work is completed. Work will take place overnight, daily, Sunday through Thursday, beginning at

7 p.m. and reopening to traffic the following morning at 6 a.m.; and on weekends, 24/7 round the clock, beginning on Saturday at 6 p.m. and reopening to all traffic on Monday at 6 a.m.



*A ‘before look’ at existing I-70 pavement that will be resurfaced via the upcoming overlay work.*

Eastbound and westbound I-70, one direction at a time, will be reduced to one open lane in several mile-long increments during the overnight/weekend hours throughout the project duration. Project work will begin in the eastbound lanes of I-70 at the west end of the project (Urish Road) moving east (to the KTA East Topeka Toll Gate). Adjacent interchange ramps will be closed during the project working hours as well. No two consecutive interchange ramps will be closed at the same time, though more than one ramp may be closed during the same timeframe. No marked detours will be provided during the ramp closures.

Traffic control will be set-up and taken down daily. Advance message boards will alert traffic in advance to the scheduled ramp closures. Signage and cones will direct drivers through the project work zone. There will be a posted speed limit of 55 mph and a 14-foot lane width restriction through the work zone throughout the project duration. Drivers should expect delays during the project working hours and may wish to use alternate routes.

Updated daily traffic information for this resurfacing project and the entire Topeka Metro Area can be viewed online: [www.ksdot.org/topekametro/laneclose.asp](http://www.ksdot.org/topekametro/laneclose.asp).

Bettis Asphalt and Construction, Inc. (Topeka, KS) is the primary contractor on this resurfacing project with a total contract cost of \$19.02 million. **The scheduled completion date for the entire resurfacing project is mid-November 2016, weather permitting.**

This project is funded by T-WORKS, the transportation program passed by the Kansas Legislature in May 2010. Find out more about this and other T-WORKS projects at:

<http://kdotapp.ksdot.org/TWorks/>.

The Kansas Department of Transportation urges all motorists to be alert, obey the warning signs, and “Give ‘Em a Brake!” when approaching and driving through the project work zone.

For more information on this resurfacing project, please contact Kimberly Qualls, Northeast Kansas Public Affairs Manager, at (785) 640-9340, or Michelle Anschutz, Field Engineering Administrator, at (785) 296-3986. (KDOT Project #70-89 KA 4136-01)

###

This information is available in alternative accessible formats. To obtain an alternative format, contact KDOT Office of Public Affairs, Eisenhower Building, 700 SW Harrison, 2nd Floor West, Topeka, Kan., 66603-3754, or (785) 296-3585 (Voice)/Hearing Impaired - 711.

Click below to connect to NE Kansas KDOT’s Social Networks:

