

# TRAFFIC ALERT

## FOR IMMEDIATE RELEASE

May 29, 2014

News Contact: Kimberly Qualls, (785) 640-9340 or [kqualls@ksdot.org](mailto:kqualls@ksdot.org)

### **K-10 South Lawrence Trafficway Project – 31st Street & Louisiana Street Roadway Closures**

**EXPECT DELAYS! 24/7 FULL ROADWAY CLOSURES:** Eastbound and westbound 31st Street from Louisiana Street to approximately .25-miles west and Louisiana Street just south of 31st Street in Lawrence (Douglas County) will be CLOSED, 24/7 round the clock, for construction work beginning on Tuesday, June 3, 2014 at 7:00 a.m., through summer 2015, weather permitting. See first map below for the roadway closure locations.

The 31st Street closure is needed for the construction of a bridge size box culvert and the reconstruction/realignment of 31st Street. The Louisiana Street closure is needed for the construction of the relocated 31st Street haunched slab bridge over Naismith Creek. See second map below for reconfiguration of 31st Street and Louisiana intersection.

No marked detours will be provided. Drivers should expect major delays and must use alternate routes during the roadway closures.

Updated traffic information for the K-10 South Lawrence Trafficway Project can be viewed online: [www.ksdot.org/topekametro/laneclose.asp](http://www.ksdot.org/topekametro/laneclose.asp). An aerial map of the new K-10 South Lawrence Trafficway, including construction phasing and traffic impacts, can be found online at: <http://www.ksdot.org/topekaMetro/projectstudytest.asp>.

The Kansas Department of Transportation urges all motorists to be alert, obey the warning signs, and “Give ‘Em a Brake!” when approaching and driving through the project work zone.

**31st Street is expected to reopen mid-summer 2015, weather permitting and the relocated Louisiana Street is expected to open late summer 2015, weather permitting.**

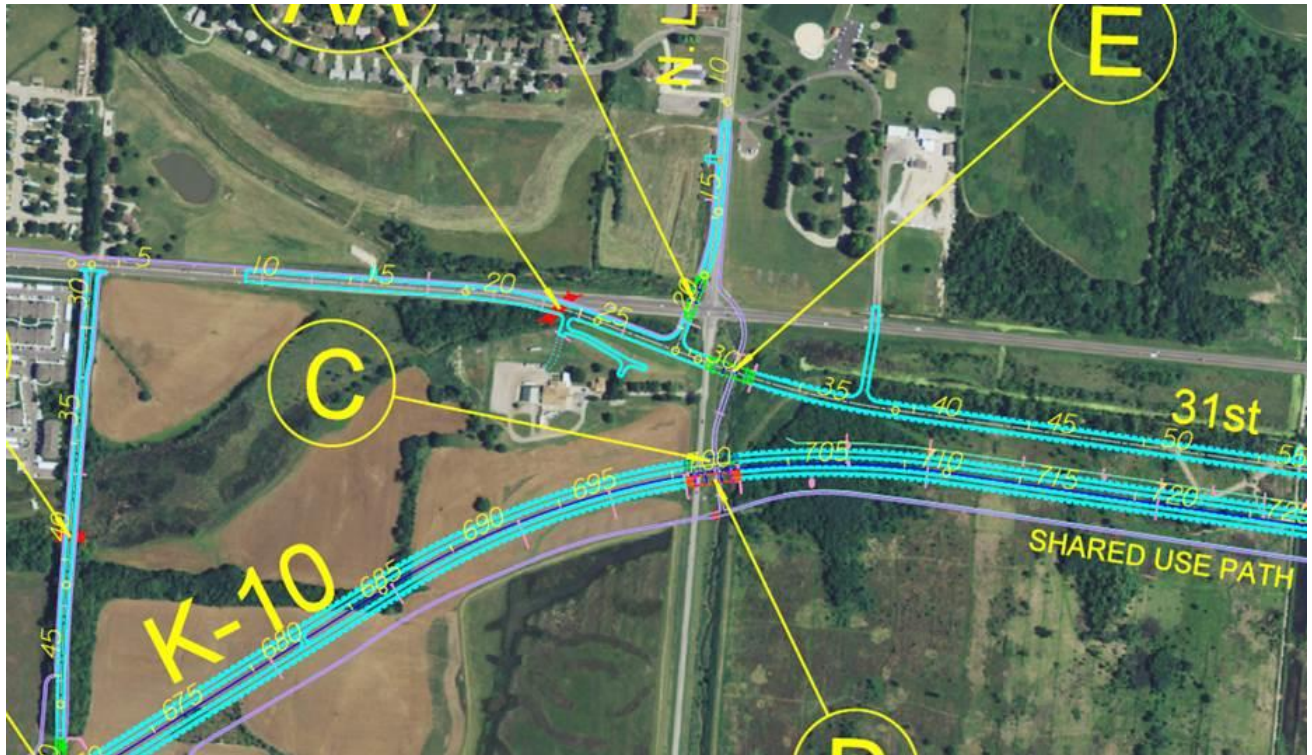
The overall scheduled completion date for the K-10 South Lawrence Trafficway Project is Fall 2016. (KDOT T-WORKS Project #10-23 K-8392-04)

---

**31st Street & Louisiana Street Closure Map:**



## Reconfiguration Map of 31st Street & Louisiana Street Intersection:



###

This information is available in alternative accessible formats. To obtain an alternative format, contact KDOT Transportation Information, Eisenhower Building, 700 SW Harrison, 2nd Floor West, Topeka, Kan., 66603-3754, or (785) 296-3585 (Voice)/Hearing Impaired - 711.

Click below to connect to KDOT's Social Networks:

