

TRAFFIC ALERT

FOR IMMEDIATE RELEASE

January 17, 2014

News Contact: Kimberly Qualls, (785) 640-9340 or kqualls@ksdot.org

K-10 South Lawrence Trafficway Project – Haskell Avenue

EXPECT DELAYS! 24/7 FULL ROADWAY CLOSURE: Northbound and southbound Haskell Avenue from 27th Street to 29th Street in Lawrence (Douglas County) will be **CLOSED**, 24/7 round the clock, for utility work, box culvert installation and reconstruction work beginning on **Monday, January 27, 2014 at 7:00 a.m., weather permitting, through Spring 2015.**

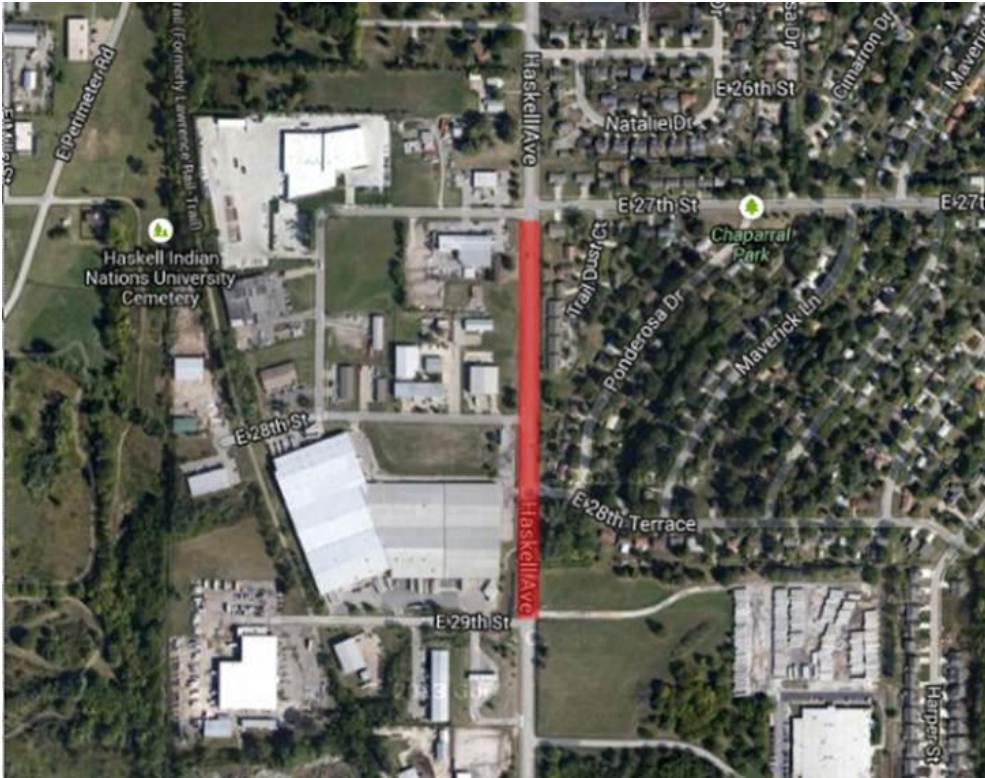
Advance message boards will alert traffic to the roadway closure. No marked detours will be provided. Drivers should expect minor delays and must use alternate routes during the roadway closures. See aerial map below for roadway closure location.

Updated traffic information for the K-10 South Lawrence Trafficway Project can be viewed online: www.ksdot.org/topekametro/laneclose.asp. An aerial map of the new K-10 South Lawrence Trafficway, including construction phasing and traffic impacts, can be found online at: <http://www.ksdot.org/topekaMetro/projectstudytest.asp>.

The Kansas Department of Transportation urges all motorists to be alert, obey the warning signs, and “Give ‘Em a Brake!” when approaching and driving through the project work zone.

The overall scheduled completion date for the K-10 South Lawrence Trafficway Project is Fall 2016. (KDOT T-WORKS Project #10-23 K-8392-04)

Haskell Avenue Closure Map:



###

This information is available in alternative accessible formats. To obtain an alternative format, contact KDOT Transportation Information, Eisenhower Building, 700 SW Harrison, 2nd Floor West, Topeka, Kan., 66603-3754, or (785) 296-3585 (Voice)/Hearing Impaired - 711.

Click below to connect to KDOT's Social Networks:

