



Legend

Closure



Alternate Route



Agencies to Notify:

Kansas Department of Transportation

City of Topeka

Kansas Highway Patrol

Topeka Police Department

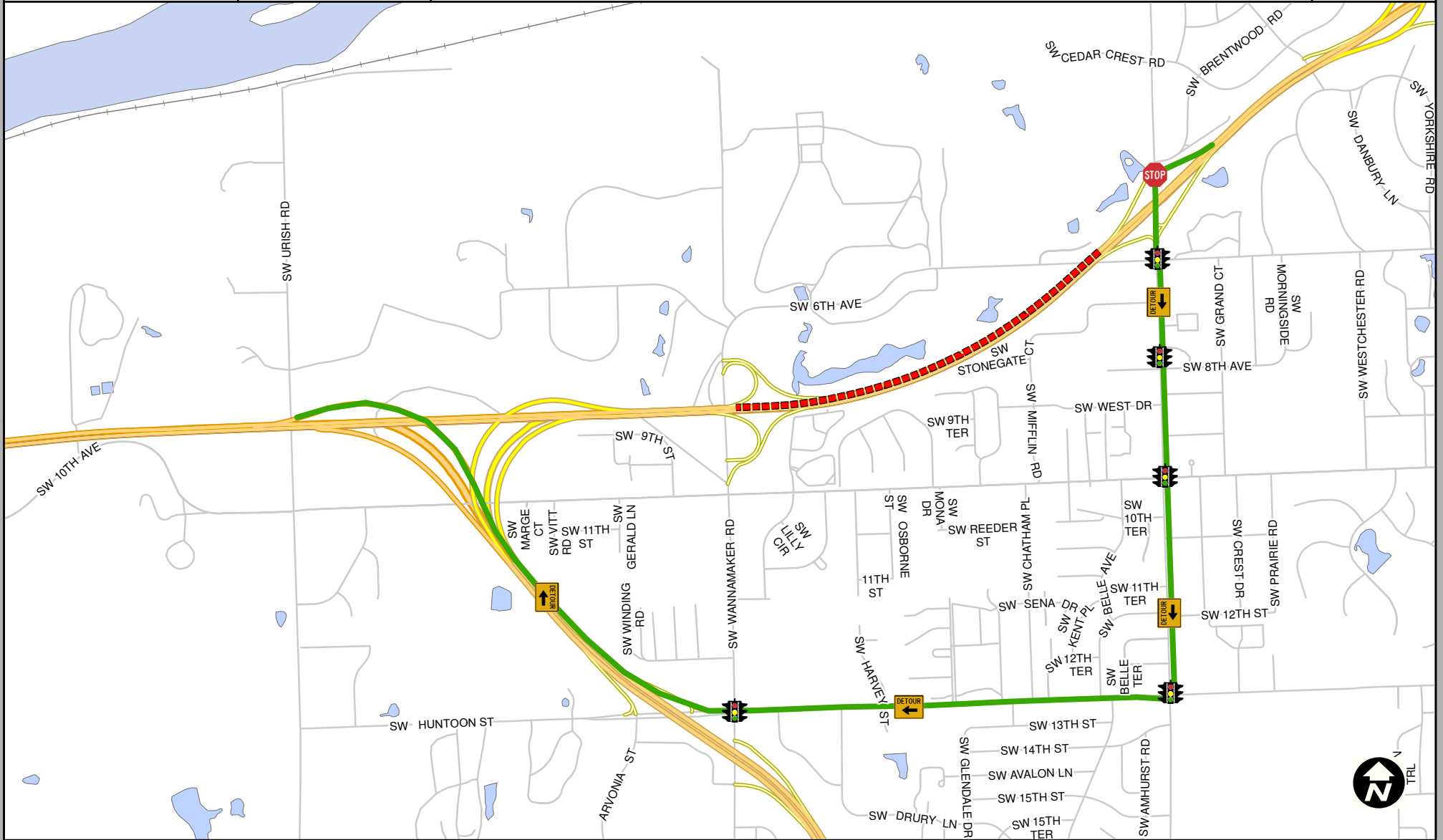
Topeka Fire Department

AMR

HOME

BACK

EXIT



Legend

Closure



Alternate Route



Agencies to Notify:

Kansas Department of Transportation

City of Topeka

Kansas Highway Patrol

Topeka Police Department

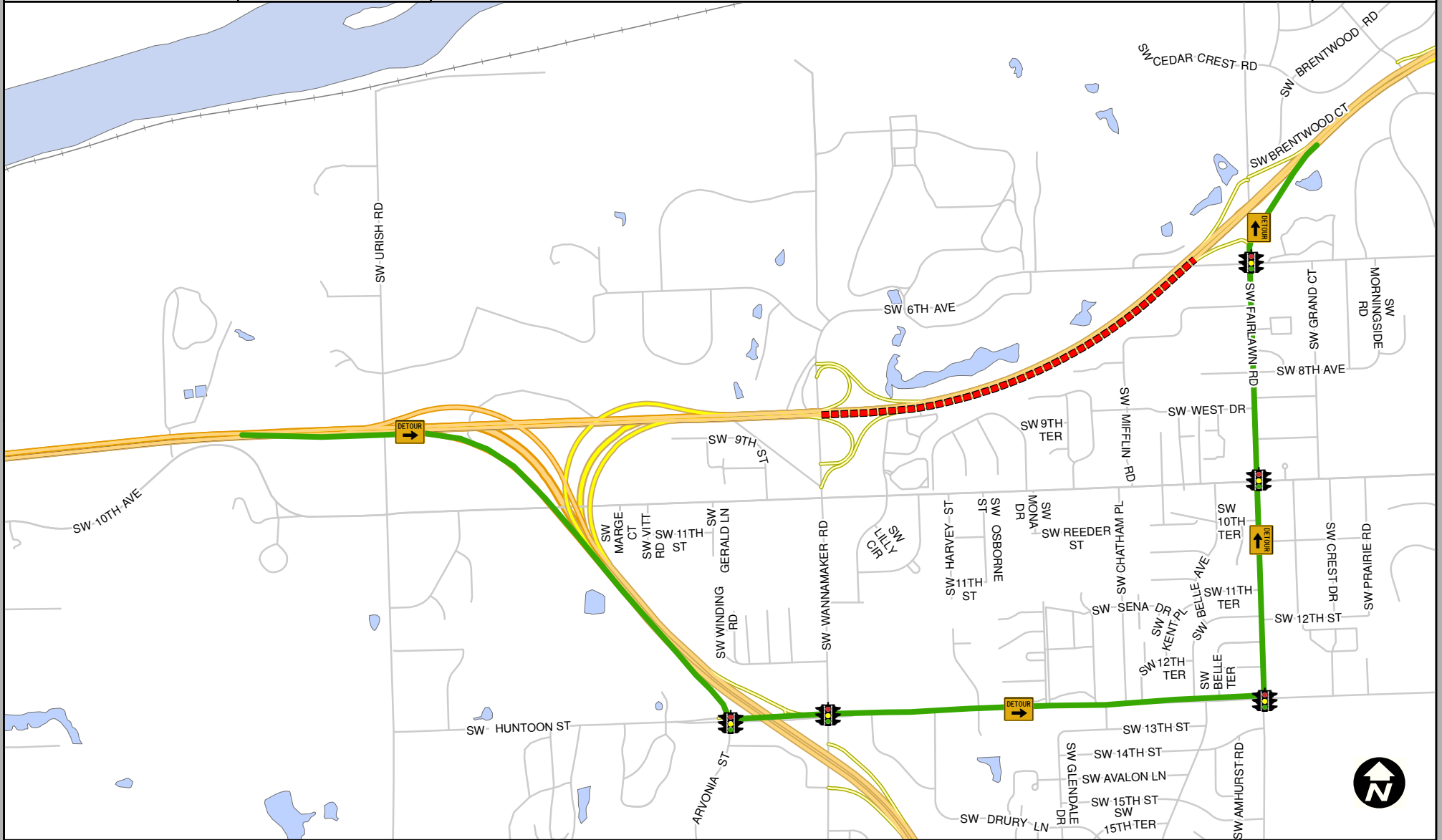
Topeka Fire Department



AMR

HOME

BACK

EXIT



Legend
Closure

Alternate Route


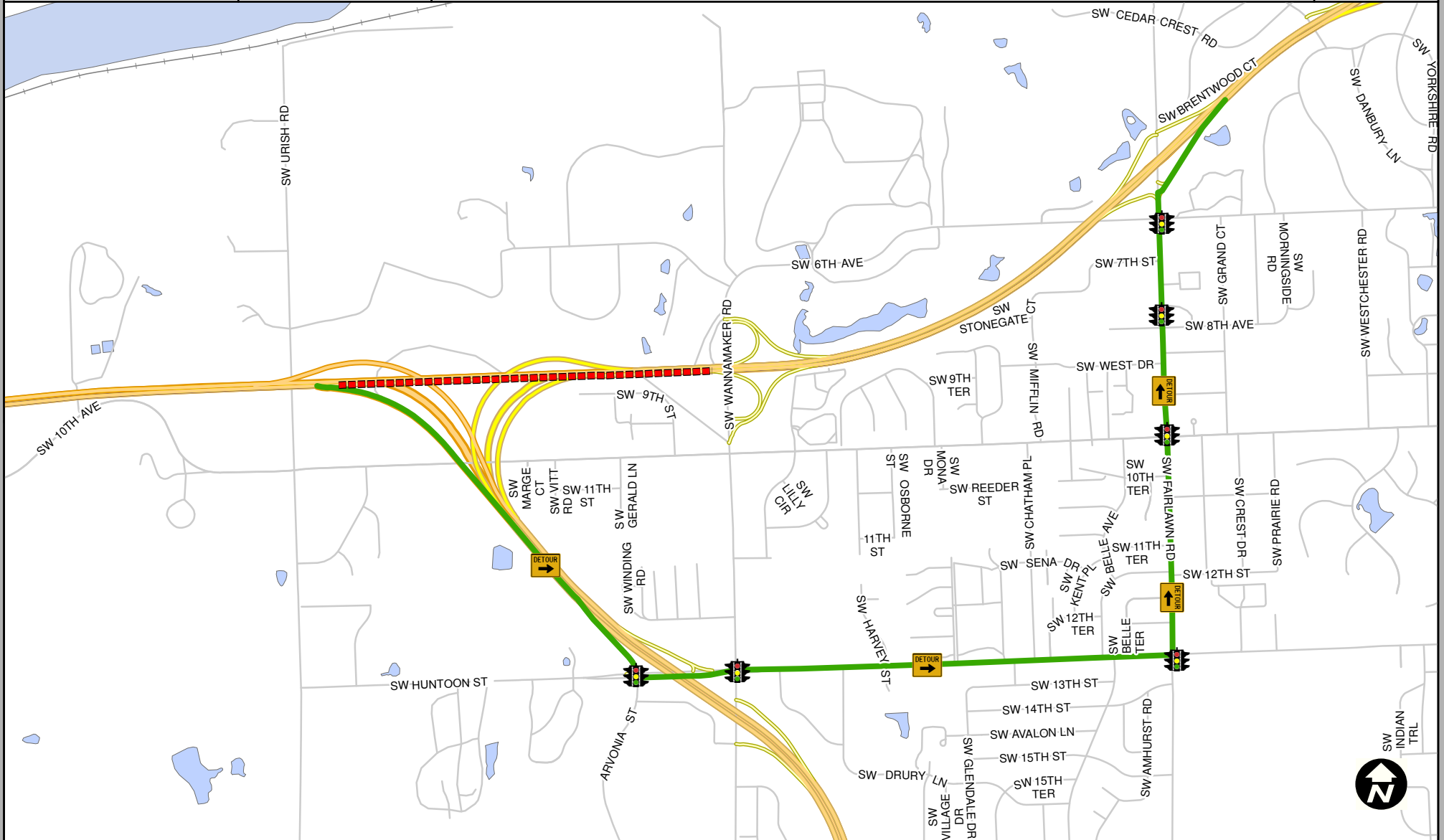
Agencies to Notify:

- | | |
|-------------------------------------|--------------------------|
| Kansas Department of Transportation | Topeka Police Department |
| City of Topeka | Topeka Fire Department |
| Kansas Highway Patrol | AMR |

HOME

BACK

EXIT



Legend
Closure

Alternate Route

Agencies to Notify:

- | | |
|-------------------------------------|--------------------------|
| Kansas Department of Transportation | Topeka Police Department |
| City of Topeka | Topeka Fire Department |
| Kansas Highway Patrol | AMR |

[HOME](#)

[BACK](#)

[EXIT](#)

FREEWAY DIVERSION

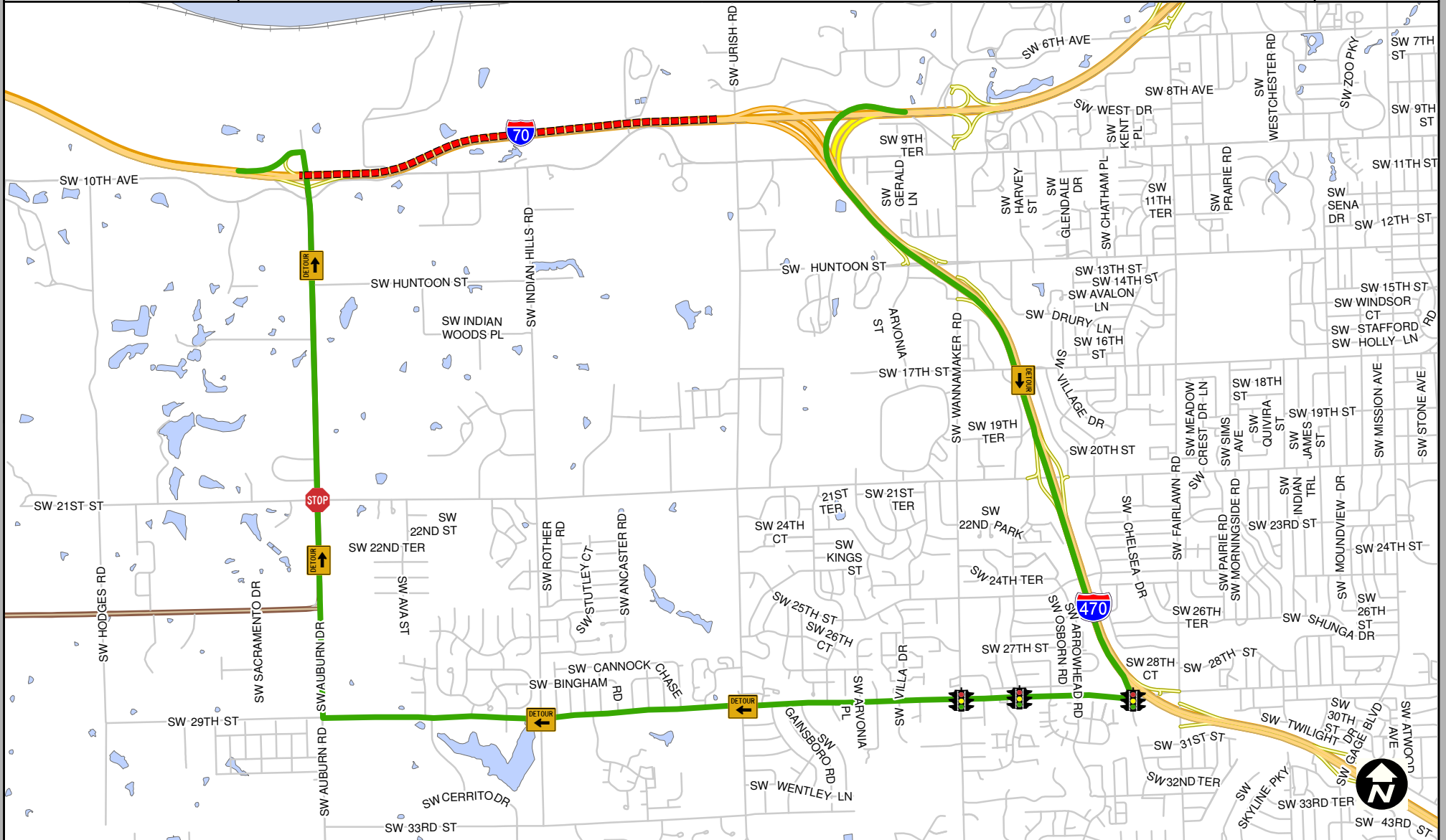
Topeka Metro

I-70 Westbound

**FROM:
I-470 NB On Ramp**

**TO:
Auburn Rd. Off Ramp**

**PLAN
70WB-17**



Legend

Closure



Alternate Route



Agencies to Notify:

Kansas Department of Transportation

City of Topeka

Kansas Highway Patrol

Topeka Police Department

Shawnee Co. Sheriff

Topeka Fire Department

AMR

Auburn Fire Department

[HOME](#)

[BACK](#)

[EXIT](#)

**FREEWAY
DIVERSION**

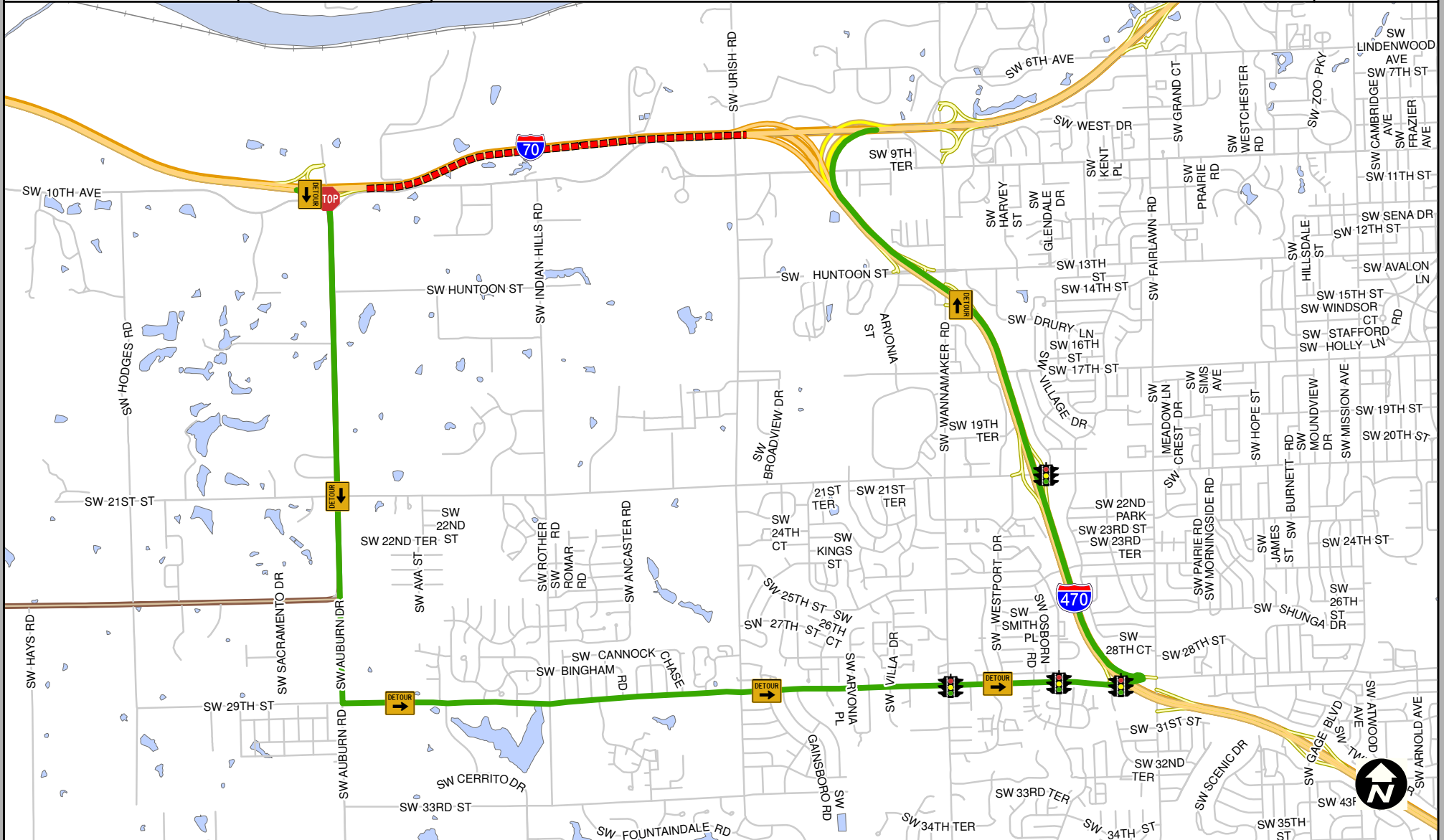
Topeka Metro

I-70 Eastbound

FROM:
Auburn Rd. On Ramp

TO:
I-470 SB Off Ramp

PLAN
70EB-17



Legend

Closure



Alternate Route



Agencies to Notify:

Kansas Department of Transportation

City of Topeka

Kansas Highway Patrol

Topeka Police Department

Shawnee Co. Sheriff

Topeka Fire Department

AMR

Auburn Fire Department

HOME

BACK

EXIT



Legend
Closure
■■■■■
Alternate Route
—————

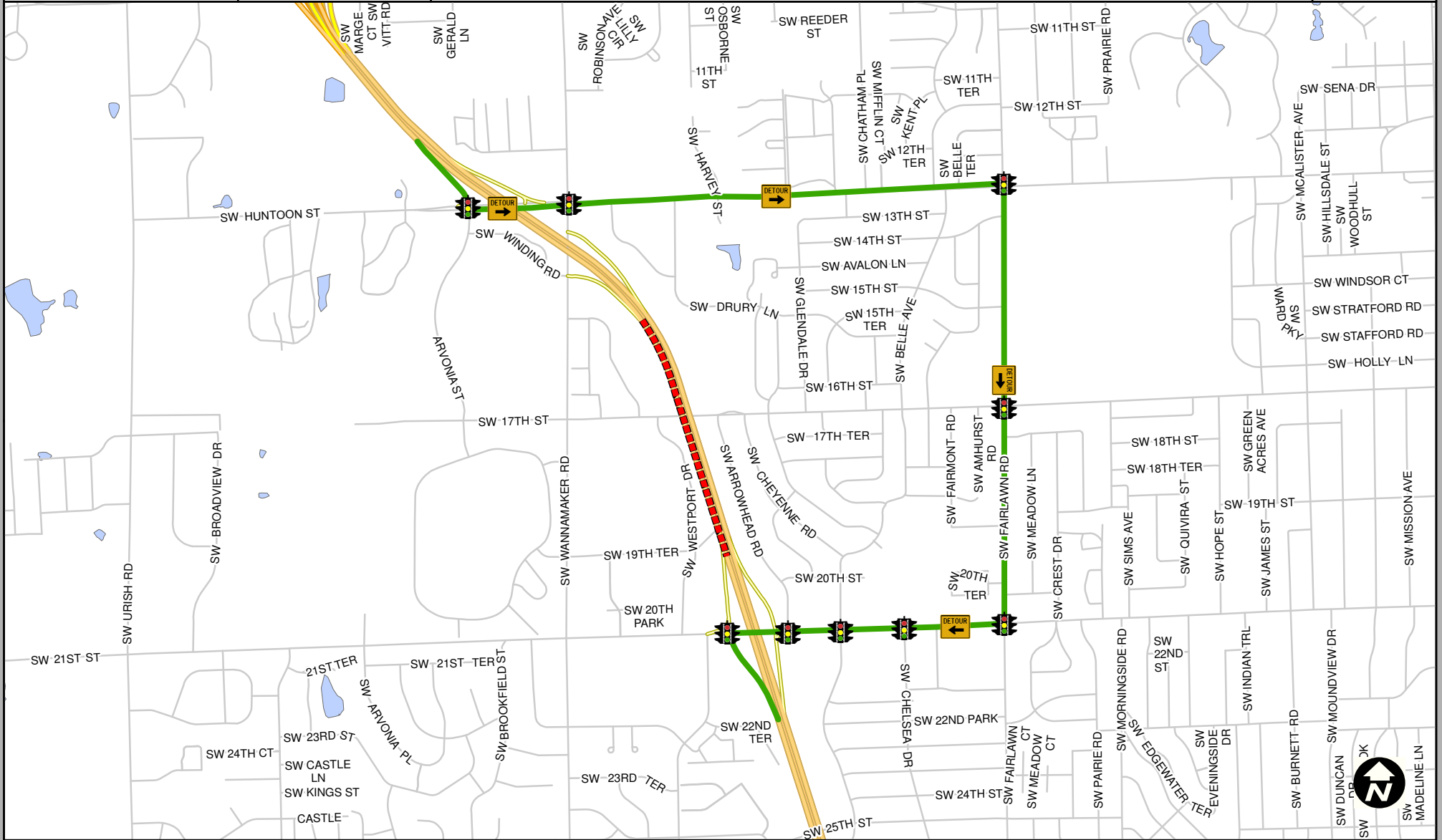
Agencies to Notify:

- | | |
|-------------------------------------|--------------------------|
| Kansas Department of Transportation | Topeka Police Department |
| City of Topeka | Topeka Fire Department |
| Kansas Highway Patrol | AMR |

[HOME](#)

[BACK](#)

[EXIT](#)



- Legend**
- Closure**
■■■■■
 - Alternate Route**
—

Agencies to Notify:

- Kansas Department of Transportation
- City of Topeka
- Kansas Highway Patrol
- Topeka Police Department
- Topeka Fire Department
- AMR

[HOME](#)

[BACK](#)

[EXIT](#)



Legend

Closure



Alternate Route



Agencies to Notify:

Kansas Department of Transportation

City of Topeka

Kansas Highway Patrol

Topeka Police Department

Topeka Fire Department

AMR

[HOME](#)

[BACK](#)

[EXIT](#)



- Legend**
- Closure**
 -
 - Alternate Route**
 -

Agencies to Notify:

- | | |
|-------------------------------------|--------------------------|
| Kansas Department of Transportation | Topeka Police Department |
| City of Topeka | Topeka Fire Department |
| Kansas Highway Patrol | AMR |

[HOME](#)

[BACK](#)

[EXIT](#)