



#K10SLT

**FOR IMMEDIATE RELEASE**

May 16, 2016

News Contact: Kimberly Qualls, (785) 640-9340 or [kqualls@ksdot.org](mailto:kqualls@ksdot.org)

## **K-10 West Leg SLT Study Public Info Open House for K-10 & E. 1200 Road Intersection**

The Kansas Department of Transportation (KDOT) is hosting a public information open house to present near-term improvements for the K-10 and E. 1200 Road intersection as part of the K-10 West Leg South Lawrence Trafficway (SLT) Study on **Wednesday, June 1, 2016**. The public is invited to attend the open house style meeting anytime between **5:00 and 7:00 p.m.** at **First United Methodist Church West Campus, Multipurpose Room, 867 U.S. 40 in Lawrence, KS 66049** (See map below for open house location).

At the open house, attendees can review the study's goals to improve K-10 to a four-lane freeway from I-70/Kansas Turnpike interchange to the U.S. 59 interchange in Lawrence, as well as view the recommended near-term improvements for the existing K-10 and E1200 Road intersection. KDOT and the study team will be on-hand to answer questions. There will be no formal presentations.

A summary of the near-term alternatives for the K-10 and E. 1200 Road intersection is located here: <http://www.ksdot.org/bureaus/TopekaMetro/projectstudytest.asp>. More information on these near-term alternatives will be further detailed via the exhibit boards at the evening open house.

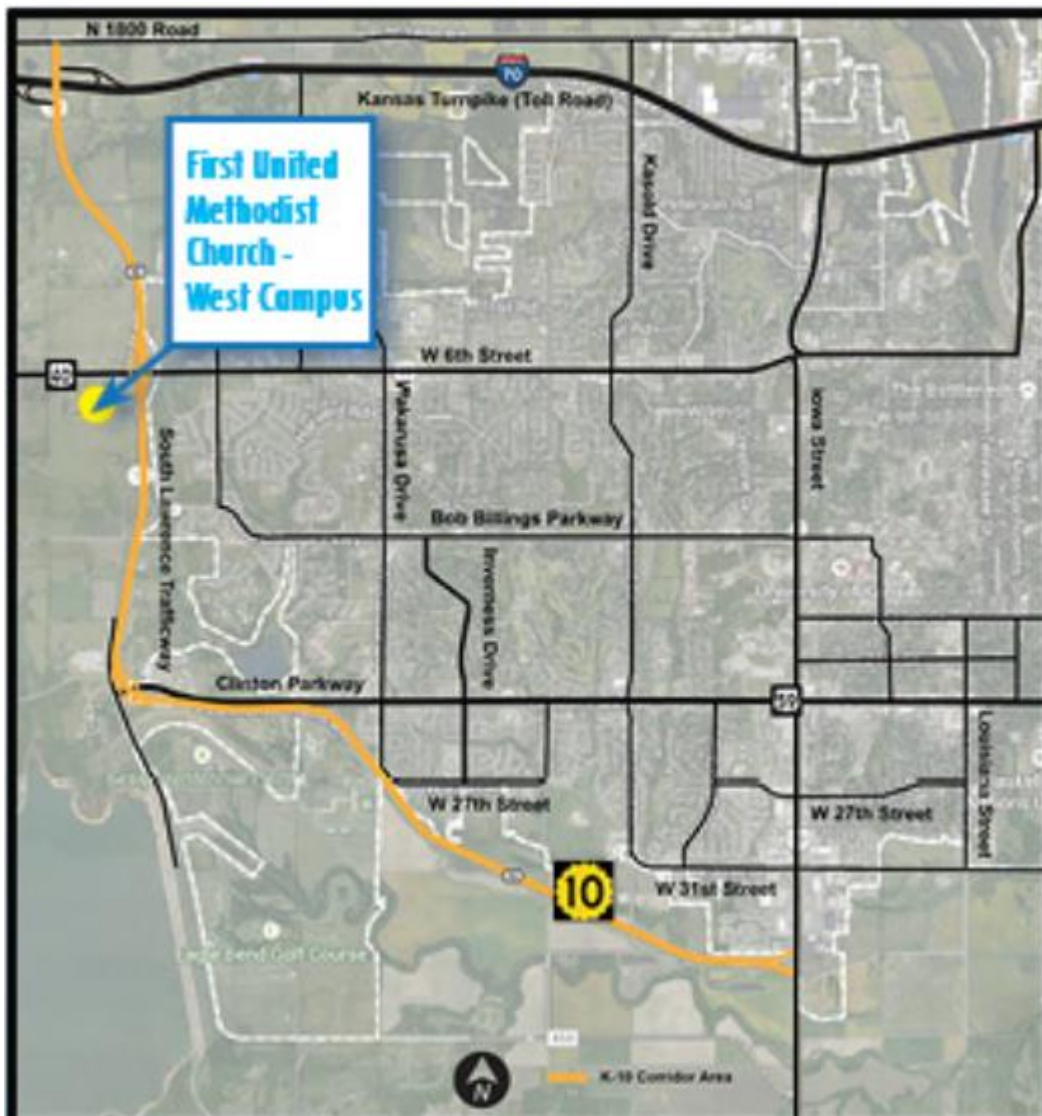
This study assessed existing and future traffic and safety needs on this section of K-10 and has identified a recommended four-lane access controlled freeway concept that provides a safe and reliable solution. Until the four-lane freeway is constructed and once the new K-10 East Leg SLT opens to traffic, there is a concern about access and safety as the existing K-10

and E1200 Road intersection. The K-10 West Leg SLT study kicked off in late August 2014 and recommended improvements will be finalized by mid- to late 2016. The purpose of this study is to:

- Provide a corridor solution that is safe and meets demand and driver expectations.
- Evaluate interchange and intersection locations through the corridor to provide safe and efficient access with consideration for the local street network.
- Re-evaluate the environmental impacts associated with the preferred alternative.

For more information on the open house or on the K-10 West Leg SLT Study, please contact Kimberly Qualls, Northeast Kansas Public Affairs Manager, at (785) 296-1092 or [kqualls@ksdot.org](mailto:kqualls@ksdot.org).

If you need special assistance at the open house, please contact Kimberly Qualls at least one week in advance of the open house at (785) 296-1092 or [kqualls@ksdot.org](mailto:kqualls@ksdot.org). (KDOT Project #10-23 KA-3634-01)



###

This information is available in alternative accessible formats. To obtain an alternative format, contact KDOT Office of Public Affairs, Eisenhower Building, 700 SW Harrison, 2nd Floor West, Topeka, Kan., 66603-3754, or (785) 296-3585 (Voice)/Hearing Impaired - 711.

Click below to connect to NE Kansas KDOT's Social Networks:

