

Northeast District Office  
121 S.W. 21st Street  
Topeka, KS 66612-1429



phone: 785-296-3881  
fax: 785-296-3720  
[www.ksdot.gov](http://www.ksdot.gov)

Calvin Reed, Secretary of Transportation

Laura Kelly, Governor

## IMMEDIATE RELEASE

Aug. 18, 2023

### For more information:

Kate Craft

[Kate.Craft@ks.gov](mailto:Kate.Craft@ks.gov)

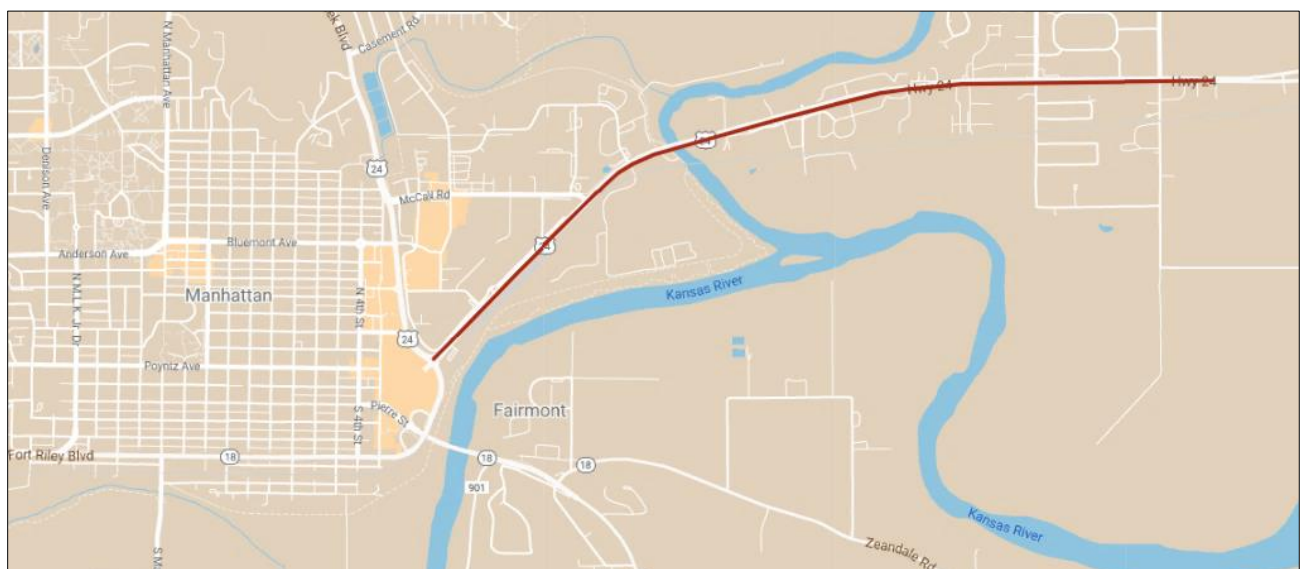
## U.S. 24 overnight work to resume in Pottawatomie County

Overnight work on the U.S. 24 resurfacing project in Pottawatomie County is scheduled to resume next week. Permanent pavement marking will be placed from K-177/Ft. Riley Boulevard in Manhattan to just east of Excel Road.

Beginning on the evening of Monday, Aug. 21, alternating lane closures will occur **overnight, from 6 p.m. to 6 a.m., Monday through Saturday.** All lanes of U.S. 24 will be open during daytime hours.

The active work zone will have a 10-foot width restriction and reduced speed limit of 40 mph. Work is expected to be complete in two weeks, conditions permitting.

KDOT urges all motorists to be alert and obey the warning signs when approaching and driving through a highway work zone. To stay aware of highway construction projects across Kansas, go to [www.kandrive.org](http://www.kandrive.org) or call 5-1-1.



###

This information can be made available in alternative accessible formats upon request. For information about obtaining an alternative format, contact the KDOT Division of Communications, 700 SW Harrison St., 2<sup>nd</sup> Fl. West, Topeka, KS 66603-3745 or phone 785-296-3585 (Voice)/Hearing Impaired – 711.

**Click below to connect to KDOT's Social Networks:**

