

Northeast District Office  
121 S.W. 21st Street  
Topeka, KS 66612-1429



phone: 785-296-3881  
fax: 785-296-3720  
[www.ksdot.gov](http://www.ksdot.gov)

Calvin Reed, Acting Secretary of Transportation

Laura Kelly, Governor

## **IMMEDIATE RELEASE**

June 1, 2023

### **For more information:**

Kate Craft  
[Kate.Craft@ks.gov](mailto:Kate.Craft@ks.gov)

## **U.S. 24 project begins next week in Pottawatomie County**

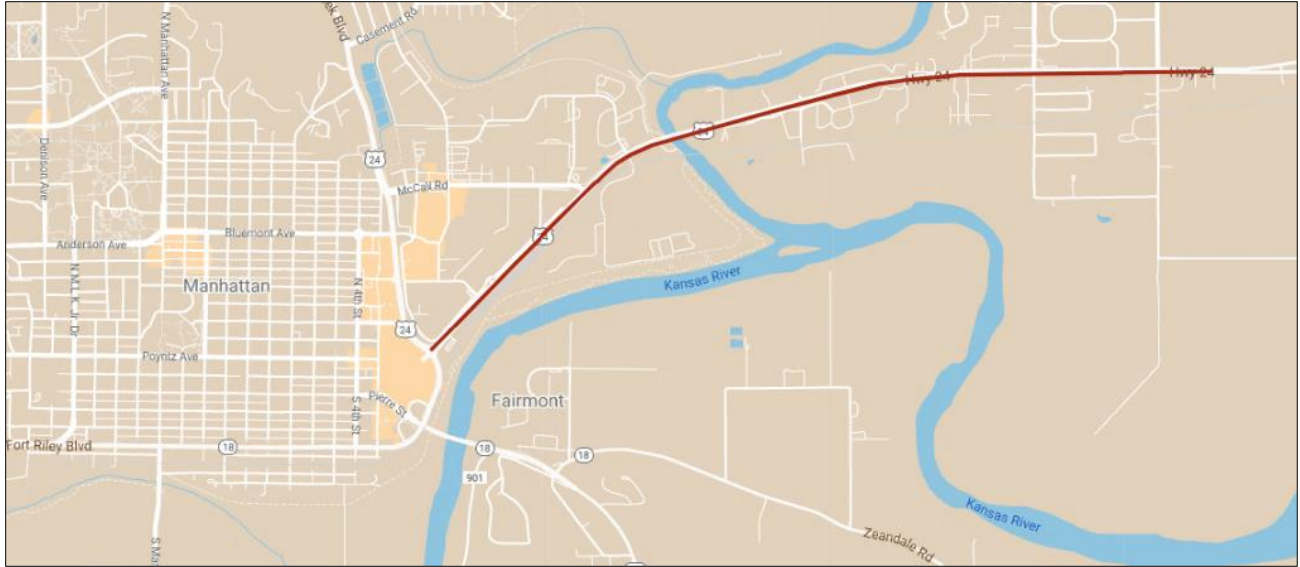
A Kansas Department of Transportation project will begin on U.S. 24 in Pottawatomie County on the evening of Monday, June 5, weather permitting. The 4-mile project extends from K-177/Ft. Riley Boulevard in Manhattan to just east of Excel Road.

Alternating lane closures will occur while shoulder widening, mill and overlay work and pavement marking is completed on both directions of U.S. 24. The active work zone will have a 10-foot width restriction and reduced speed limit of 40 mph.

**Work will take place overnight, from 6 p.m. to 6 a.m., Monday through Saturday. All lanes of U.S. 24 included in this project will be open during daytime hours. However, the City of Manhattan is also working on a section of U.S. 24 near Levee Drive. Lane closures that are part of the city's project will remain in place for the duration of that project.**

Shilling Construction Co., of Manhattan, is the contractor on the \$2.6 million project, which is expected to be complete by late July.

KDOT urges all motorists to be alert and obey the warning signs when approaching and driving through a highway work zone. To stay aware of highway construction projects across Kansas, go to [www.kandrive.org](http://www.kandrive.org) or call 5-1-1.



###

This information can be made available in alternative accessible formats upon request. For information about obtaining an alternative format, contact the KDOT Division of Communications, 700 SW Harrison St., 2<sup>nd</sup> Fl. West, Topeka, KS 66603-3745 or phone 785-296-3585 (Voice)/Hearing Impaired – 711.

**Click below to connect to KDOT's Social Networks:**

