

Northeast District Office
121 S.W. 21st Street
Topeka, KS 66612-1429



phone: 785-296-3881
fax: 785-296-3720
www.ksdot.org

Julie Lorenz, Secretary

Laura Kelly, Governor

IMMEDIATE RELEASE

Dec. 16, 2021

For more information:

Kate Craft

Kate.Craft@ks.gov

Final phase of U.S. 24 bridge replacement begins Monday

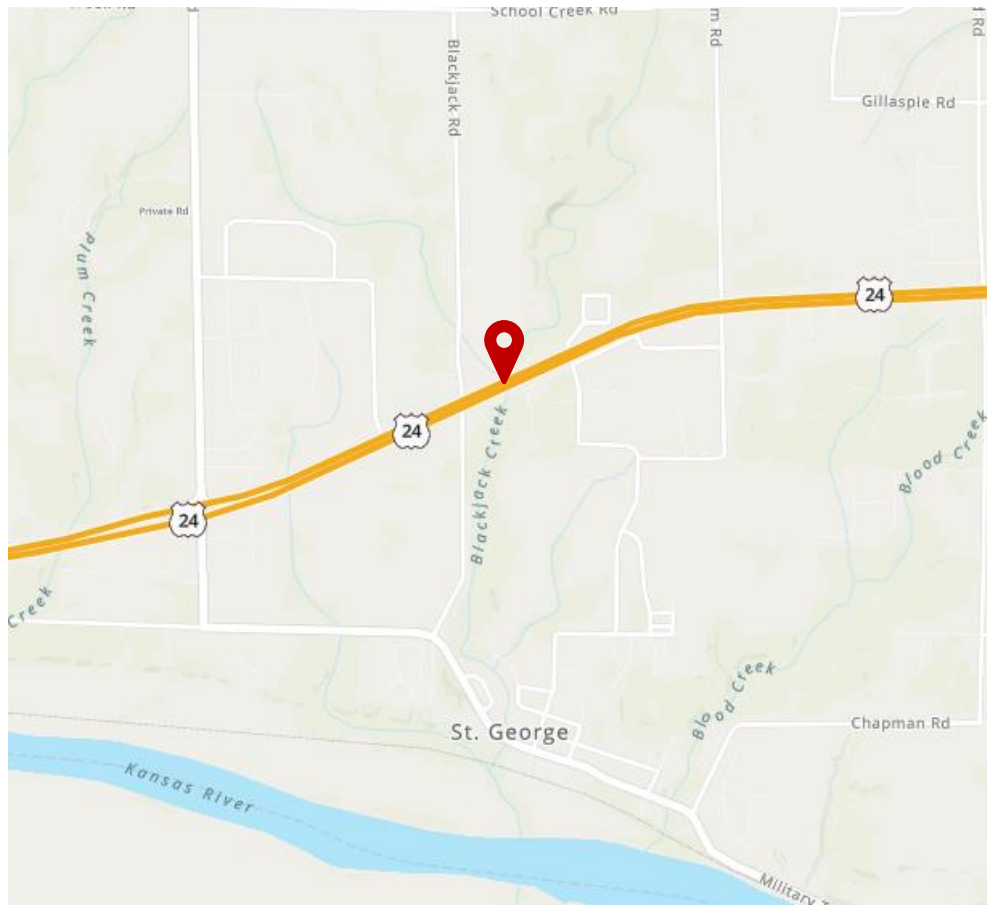
The final phase of the Blackjack Creek bridge replacement project on eastbound U.S. 24 will begin Monday, Dec. 20, weather permitting. The bridge is located approximately six miles west of Wamego in Pottawatomie County.

According to the Kansas Department of Transportation, the project will be restriped, and traffic control will direct eastbound drivers onto the newly constructed bridge. Eastbound and westbound traffic will still be reduced to one lane while the temporary crossovers are removed. The same road closures, turning restrictions, sideroad closures and reduced speed limit are still in effect.

Work will occur during the daylight hours, Monday to Friday and Saturdays, as necessary. Project completion is expected in early 2022.

King Construction, Inc., of Hesston, is the contractor on the \$1.9 million project.

KDOT urges all motorists to be alert and obey the warning signs when approaching and driving through a highway work zone. To stay aware of all road construction projects across Kansas, go to www.kandrive.org or call 5-1-1.



###

This information can be made available in alternative accessible formats upon request. For information about obtaining an alternative format, contact the KDOT Office of Public Affairs, 700 SW Harrison St., 2nd Fl. West, Topeka, KS 66603-3754 or phone 785-296-3585 (Voice) / 7-1-1 (Hearing Impaired).

Click below to connect to KDOT's Social Networks:

