

Northeast District Office
121 S.W. 21st Street
Topeka, KS 66612-1429



phone: 785-296-3881
fax: 785-296-3720
www.ksdot.org

Julie Lorenz, Secretary

Laura Kelly, Governor

IMMEDIATE RELEASE

Feb. 22, 2021

For more information:

Kelly Kultala

(785) 207-0715

Kelly.Kultala@ks.gov

K-7/17th Street in Atchison closed tomorrow

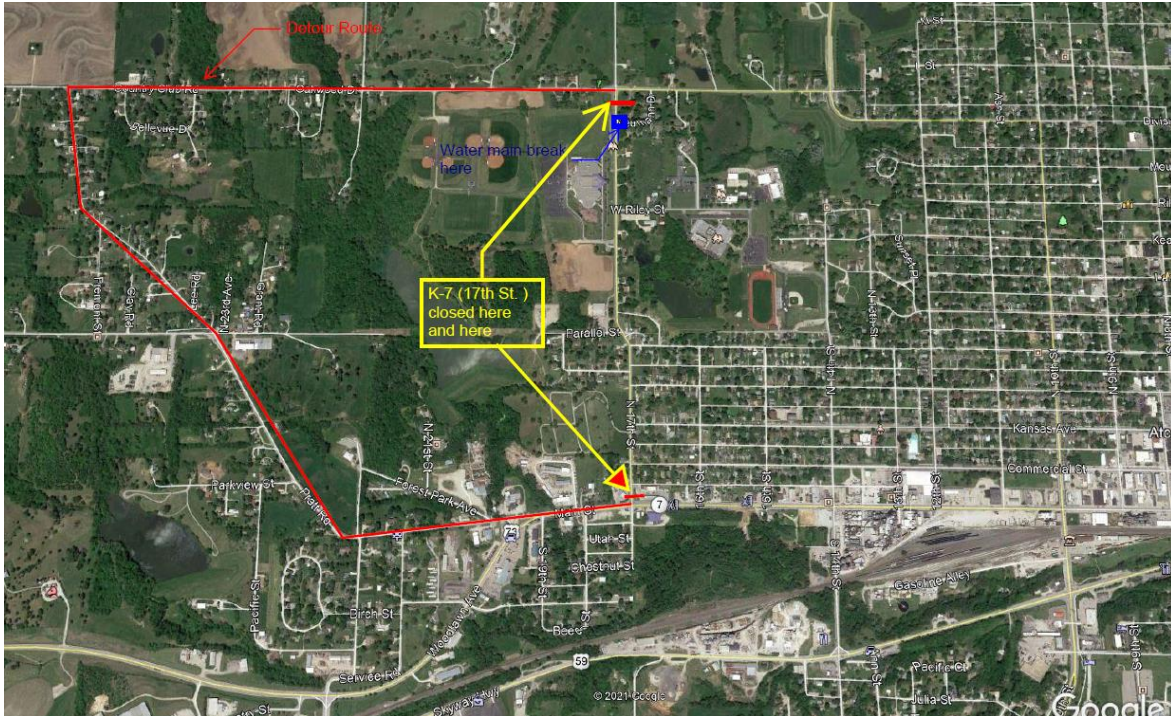
The Kansas Department of Transportation will close K-7/17th Street in Atchison, Tuesday, Feb. 23 at 9 a.m., due to a water main break.

Work is expected to take 10 to 12 hours. There is a signed detour, see map below.

Detour directions: From the north, at 17th Street, continue west on Country Club Road. Take a left/south on Pratt Road to Main Street. From the south, continue west on Main Street, which turns into Pratt Road. At the 286th Street intersection stay right and follow Pratt Road. At Country Club Road turn right/east and follow back to K-7.

Traffic will be controlled using road closure signage and traffic cones.

KDOT urges all motorists to be alert and obey the warning signs when approaching and driving through a highway work zone. To stay aware of all road construction projects across Kansas go to www.kandrive.org or call 5-1-1. Drive safely and always wear your seat belt.



###

This information can be made available in alternative accessible formats upon request.
For information about obtaining an alternative format, contact the KDOT Office of Public Affairs,
700 SW Harrison St., 2nd Fl West, Topeka, KS 66603-3754 or phone 785-296-3585
(Voice)/Hearing Impaired – 711.

Click below to connect to KDOT's Social Networks:

