

Northeast District Office
121 S.W. 21st Street
Topeka, KS 66612-1429



phone: 785-296-3881
fax: 785-296-3720
www.ksdot.org

Julie Lorenz, Secretary

Laura Kelly, Governor

IMMEDIATE RELEASE

Oct. 9, 2020

For more information:

Kelly Kultala

(785) 207-0715

Kelly.Kultala@ks.gov

Mill and overlay project in Osage County to begin Monday

A mill and overlay project on U.S. 56 and K-31 in Osage County, to begin Monday, Oct. 12, weather permitting. The project is expected to be completed in two phases.

The first phase will begin Monday, Oct. 12 on U.S. 56, from the U.S. 56/K-31 junction proceeding west to the Lyon/Osage County line, from mile marker 382 to mile marker 388, and includes both spurs at the east junction.

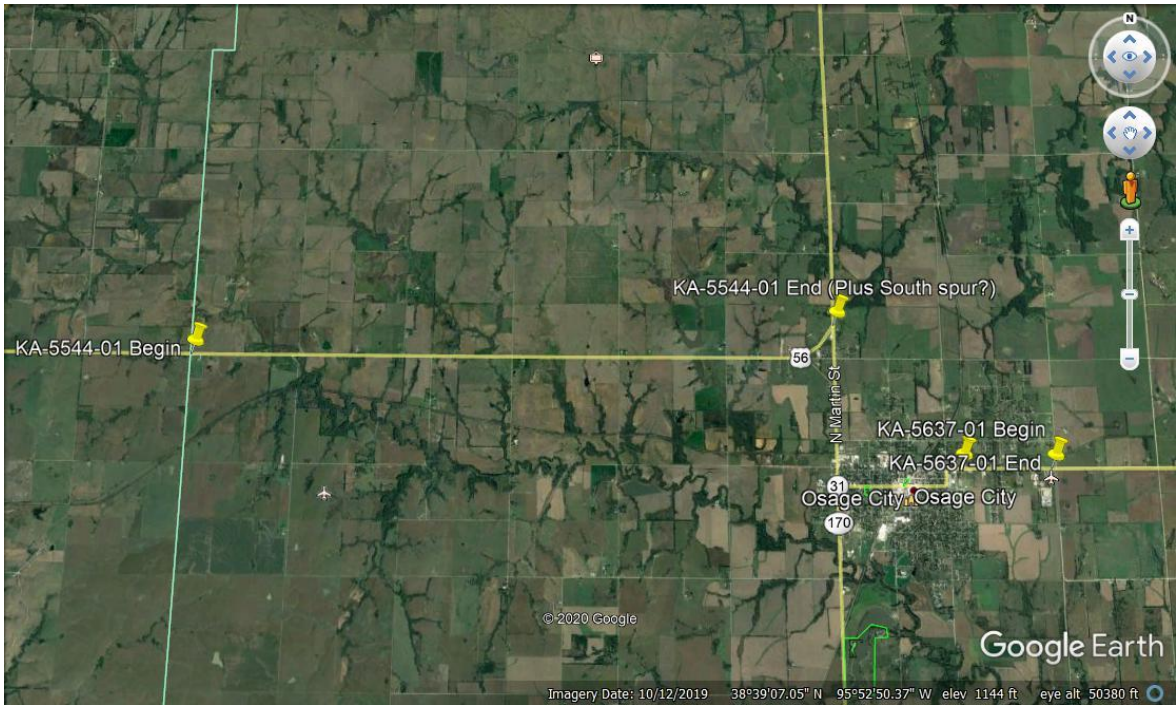
Phase two is expected to begin Wednesday, Oct. 21 on K-31, from mile marker 25 to mile marker 27, on the east edge of Osage City.

Both phases are expected to be completed by Oct. 28, weather permitting.

Work will occur during daylight hours. Traffic will be controlled using flaggers and a pilot car operation and motorists should expect delays of up to 15 minutes. Traffic on the side roads will have to wait on the pilot car.

Hamm Inc. of Perry is the contractor on the \$900,000 project.

KDOT urges all motorists to be alert and obey the warning signs when approaching and driving through a highway work zone. To stay aware of all road construction projects across Kansas go to www.kandrive.org or call 5-1-1. Drive safely and always wear your seat belt.



###

This information can be made available in alternative accessible formats upon request. For information about obtaining an alternative format, contact the KDOT Office of Public Affairs, 700 SW Harrison St., 2nd Fl West, Topeka, KS 66603-3754 or phone 785-296-3585 (Voice)/Hearing Impaired – 711.

Click below to connect to KDOT's Social Networks:

