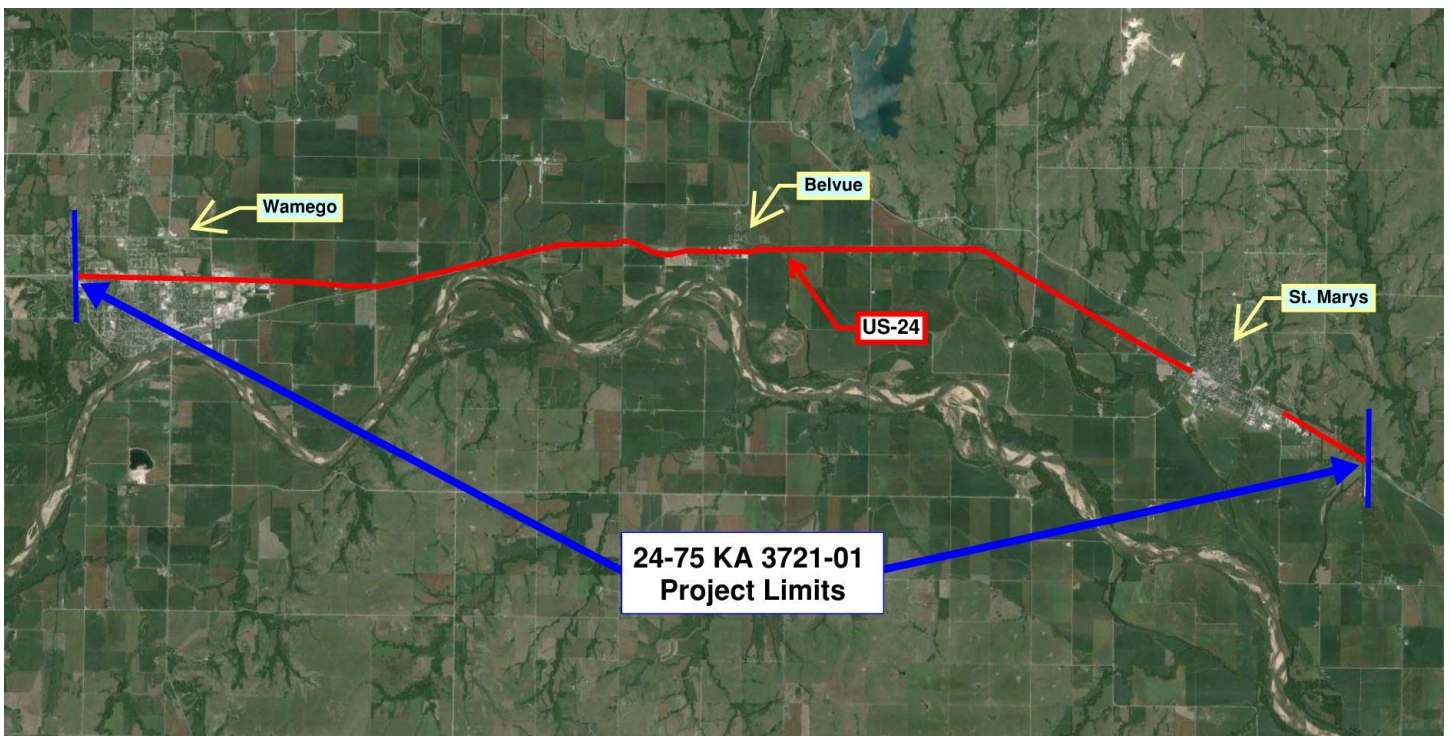


FOR IMMEDIATE RELEASE

June 17, 2015

News Contact: Kimberly Qualls, (785) 640-9340 or kqualls@ksdot.org
Jerry Haug, (785) 456-2353 or jerryh@ksdot.org



U.S. 24 Chip Seal Project to Begin in Pottawatomie County

On either **Monday, July 6 or Monday, July 13**, weather permitting, a chip seal project will begin on a 16.42-mile portion of U.S. 24 from west of the Wamego city limits east to the Pottawatomie/Shawnee County line in Pottawatomie County. Project work includes the application of a thin layer of asphalt over the pavement topped with a layer of rock chips that is pressed into place with heavy rollers. Once the chip seal work is completed, new pavement markings will be applied on the resurfaced roadway. Work will take place during daytime hours, Monday through Friday, with some occasional Saturday work.

On the two-lane portion of U.S. 24: eastbound and westbound U.S. 24 will be reduced to one lane for both directions from the Pottawatomie/Shawnee County line east to Miller Drive in Wamego (0.9-miles east of the U.S. 24 and K-99 junction). Traffic will be directed through the project work zone by a flagger and pilot car operation. The chip seal will stop at the east city limits of St. Marys and resume at the west city limits of the city. There will be no chip seal applied within the city limits of St. Marys.

On the four-lane portion of U.S. 24: eastbound and westbound U.S. 24 traffic will be reduced to one lane in one direction at a time from Miller Drive (0.9-miles east of the US-24 and K-99 junction) to the west city limits of Wamego. Traffic will be directed through the work zone via signage and cones.

There will be an 11-foot lane width restriction throughout the project duration and the speed limit will be reduced from the posted speed limit by 10 mph through the project work zone throughout the project duration. No large structures or superloads will be allowed through the project work zone.

The Kansas Department of Transportation urges all motorists to be alert, obey the warning signs, and “Give ‘Em a Brake!” when approaching and driving through the project work zone.

Mid America Road Builders, Inc. (Platte City, MO) is the primary contractor on this resurfacing project with a total contract cost of \$526,250. **Project work is scheduled to be completed in late August 2015, weather permitting.**

This project is funded by T-WORKS, the transportation program passed by the Kansas Legislature in May 2010. Find out more about this and other T-WORKS projects at: <http://kdotapp.ksdot.org/TWorks/>.

For more information on this resurfacing project, please contact Kimberly Qualls, Northeast Kansas Public Affairs Manager, at (785) 640-9340, or Jerry Haug, Wamego Construction Engineer, at (785) 456-2353. (KDOT Project #24-75 KA-37-21-01)

###

This information is available in alternative accessible formats. To obtain an alternative format, contact KDOT Office of Public Affairs, Eisenhower Building, 700 SW Harrison, 2nd Floor West, Topeka, Kan., 66603-3754, or (785) 296-3585 (Voice)/Hearing Impaired - 711.

Click below to connect to NE Kansas KDOT’s Social Networks:

