

TRAFFIC ALERT

FOR IMMEDIATE RELEASE

June 14, 2014

News Contact: Kimberly Qualls, (785) 640-9340 or kqualls@ksdot.org

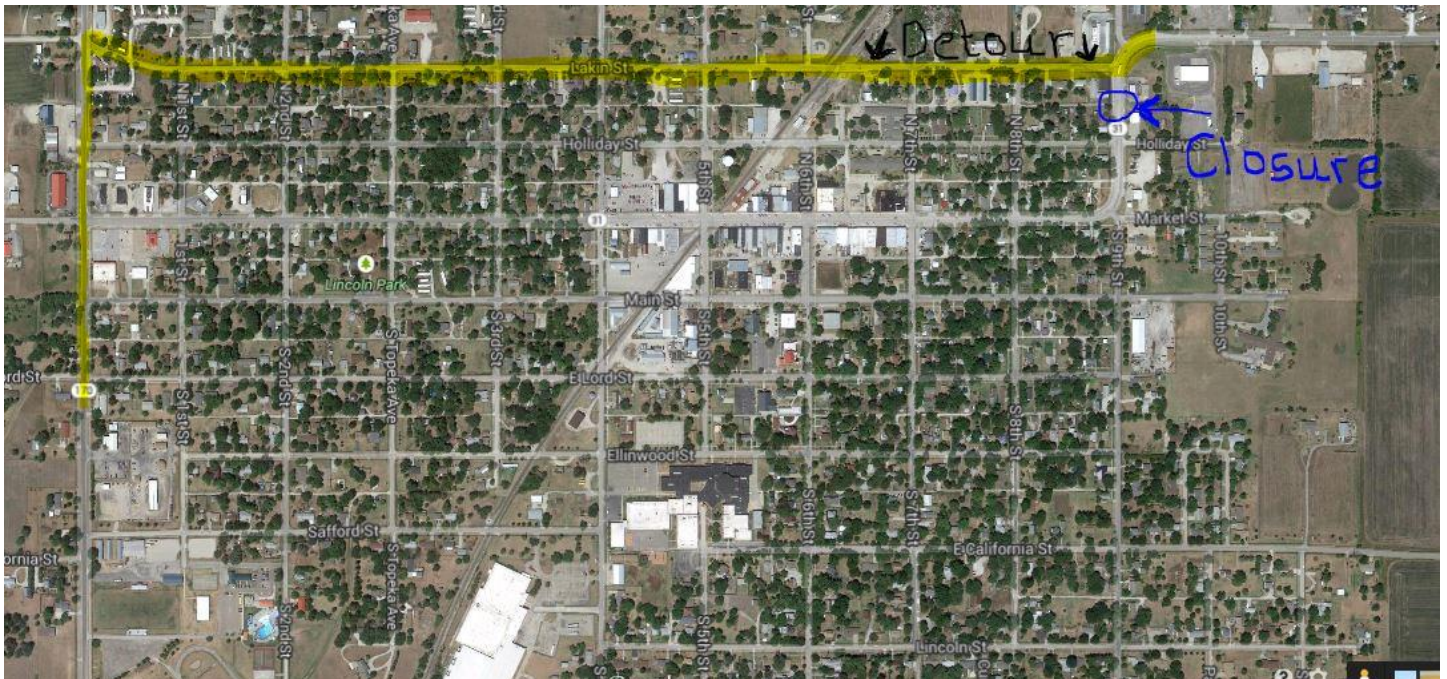
K-31

24/7 ROADWAY CLOSURE: Eastbound and westbound K-31 (9th Street) between Lakin Street and Holliday Street in Osage City (Osage County) will be CLOSED to all through traffic for utility work by the City of Osage beginning at **6:00 a.m. on Tuesday, June 17 and will reopen to all traffic by 4:00 p.m. on Thursday, June 18**, weather permitting.

Traffic will follow a marked detour via Lakin Street west to Martin Street back to K-31. Drivers can expect minor delays and must use alternate routes during the roadway closure. See map below for detour route and K-31 closure location.

The Kansas Department of Transportation urges all motorists to be alert, obey the warning signs, and "Give 'Em a Brake!" when approaching and driving through the project work zone.

K-31 Marked Detour Route:



###

This information is available in alternative accessible formats. To obtain an alternative format, contact KDOT Transportation Information, Eisenhower Building, 700 SW Harrison, 2nd Floor West, Topeka, Kan., 66603-3754, or (785) 296-3585 (Voice)/Hearing Impaired - 711.

Click below to connect to NE Kansas KDOT's Social Networks:

