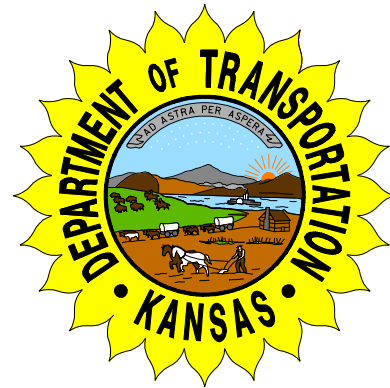


# US-54 Sedgwick County

## Proj. No. 54-87 K-8235-01

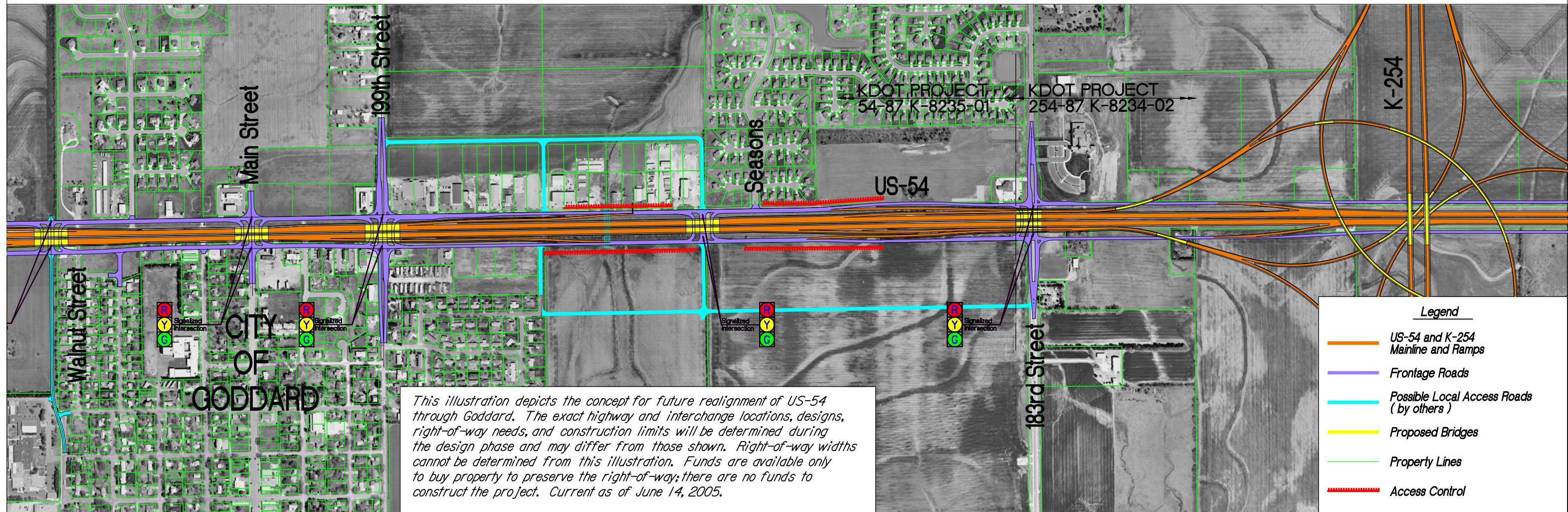
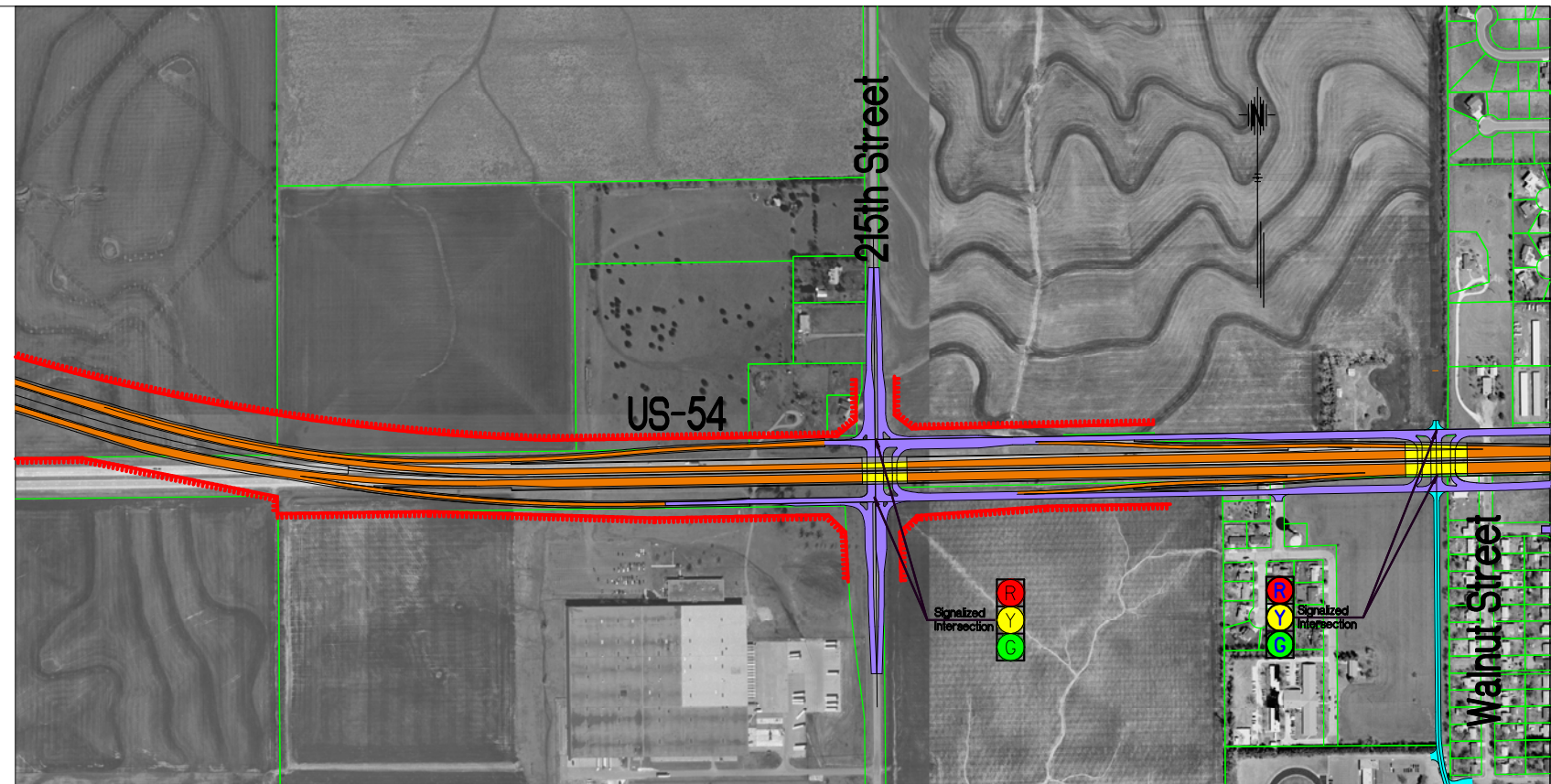


**Kansas Department of Transportation**



**Professional Engineering Consultants, P.A.**

303 S. TOPEKA • WICHITA, KANSAS 67202



*This illustration depicts the concept for future realignment of US-54 through Goddard. The exact highway and interchange locations, designs, right-of-way needs, and construction limits will be determined during the design phase and may differ from those shown. Right-of-way widths cannot be determined from this illustration. Funds are available only to buy property to preserve the right-of-way; there are no funds to construct the project. Current as of June 14, 2005.*

**Legend**

- US-54 and K-254 Mainline and Ramps
- Frontage Roads
- Possible Local Access Roads (by others)
- Proposed Bridges
- Property Lines
- - - Access Control