

North Central District Office
1006 N. Third, P.O. Box 857
Salina, KS 67402-0857



phone: 785-823-3754
fax: 785-823-1649
www.ksdot.org

Richard Carlson, Interim Secretary

Sam Brownback, Governor

FOR IMMEDIATE RELEASE

July 25, 2016

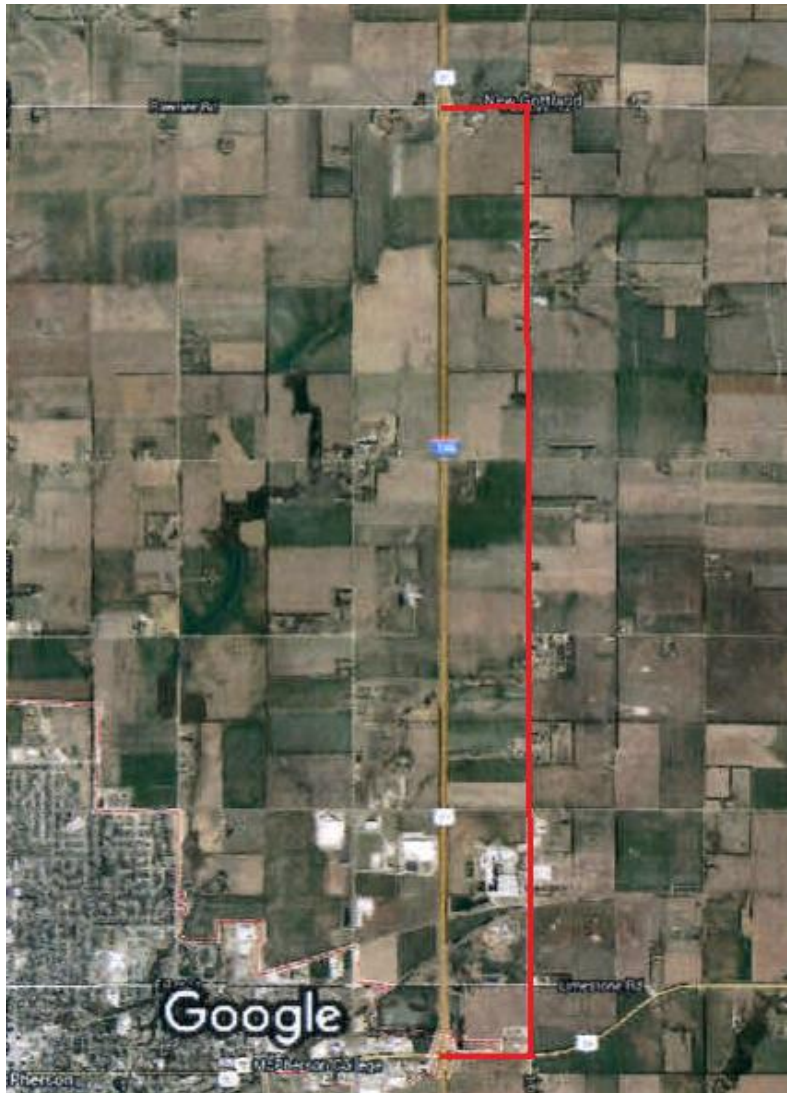
News contact: David Greiser, (785) 823-3754;
dgreiser@ksdot.org

Traffic on I-135 to be detoured in McPherson County

A new interchange on I-135 at Mohawk Rd in McPherson County is under construction approximately 2.5 miles north of the I-135/US-56 Interchange. Construction had begun March 14, 2016 comprised of earth work on either side of the Interstate. In order to safely place steel bridge beams over I-135 it is necessary to temporarily detour first southbound then northbound traffic.

The southbound lanes of I-135 will be closed between mile post 65 (Pawnee Road) and mile post 60 (US-56 highway) from 10:00 a.m. to 3:00 p.m. on Tuesday August 2nd. Southbound traffic will be detoured east on Pawnee Road approximately 1/2 mile to 17th Avenue, south approximately 5 miles on 17th Avenue to US-56, and west approximately 1/2 mile on US-56 back to I-135. New Bridge Construction at mile post 63 will temporarily block the roadway.

The northbound lanes of I-135 will be closed between mile post 60 (US-56 highway) and mile post 65 (Pawnee Road) from 10:00 a.m. and 3:00 p.m. on Wednesday August 3rd. Northbound traffic will follow the same detour in reverse.



###

This information can be made available in alternative accessible formats upon request.
For information about obtaining an alternative format, contact the Bureau of Transportation Information,
700 SW Harrison St., 2nd Fl West, Topeka, KS 66603-3754 or phone 785-296-3585 (Voice)/Hearing Impaired – 711.

Click below to connect to Social Networks:

