

Southeast District Office
411 W. Fourteenth
Chanute, KS 66720-2894



phone: 620-902-6400
fax: 620-431-4406
www.ksdot.org

Julie Lorenz, Secretary

Laura Kelly, Governor

IMMEDIATE RELEASE

July 13, 2020

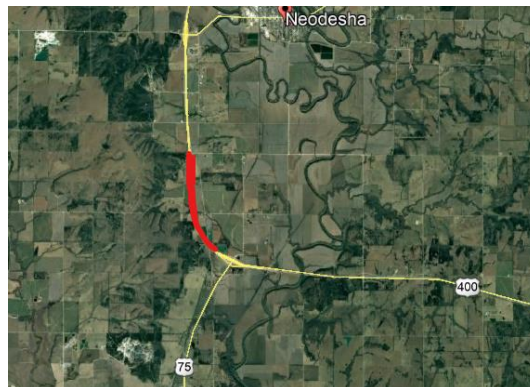
For more information: Priscilla Petersen, (620) 902-6433; priscilla.petersen@ks.gov

KDOT replacing concrete on U.S. 400 in Montgomery County

This week the Kansas Department of Transportation (KDOT) started a project to replace concrete slabs on U.S. 400. The project area is located between the Wilson-Montgomery county line and the south junction of U.S. 400/U.S. 75.

Traffic on the four-lane section will be reduced to one lane in each direction. The posted speed limit is 50 miles per hour through the work zone. KDOT reminds drivers to slow down and pay attention.

The work should be completed by late summer, weather permitting. Persons with questions may contact Marcus Leck, (620) 577-7313, or Priscilla Petersen, (620) 902-6433.



#####

This information can be made available in alternative accessible formats upon request. For information about obtaining an alternative format, contact the KDOT Division of Communications, 700 SW Harrison St., 2nd Fl West, Topeka, KS 66603-3754 or phone 785-296-3585 (Voice)/Hearing Impaired – 711.

Click below to connect to KDOT's Social Networks:

