

Southeast District Office
411 W. Fourteenth
Chanute, KS 66720-2894



phone: 620-902-6400
fax: 620-431-4406
www.ksdot.org

Julie Lorenz, Secretary

Laura Kelly, Governor

IMMEDIATE RELEASE

Oct. 1, 2020

Contact: Priscilla Petersen, (620) 902-6433; priscilla.petersen@ks.gov

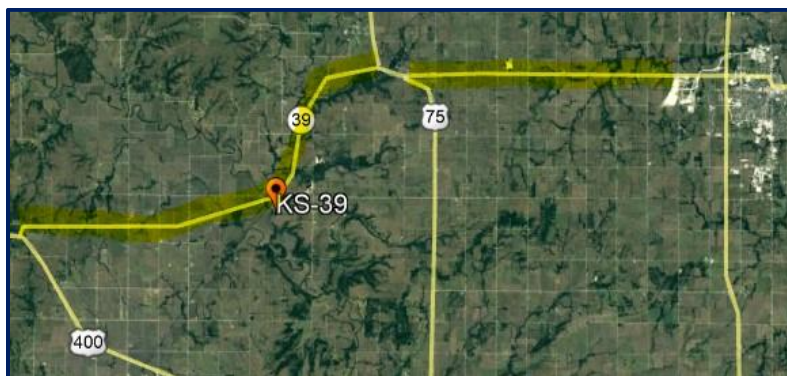
KDOT to start K-39 resurfacing projects next week

The week of Oct. 5 the Kansas Department of Transportation (KDOT) expects to begin work on two projects to resurface K-39 with ultra-thin bonded asphalt. The combined project area starts at the U.S. 400 junction at Fredonia and continues east to end at the U.S. 169 junction at Chanute.

Flaggers and a pilot car will direct one-lane traffic through the work zone during daylight hours; expect delays of 15 minutes or less.

The resurfacing work should be finished in one month, weather permitting. Bettis Asphalt & Construction, Inc., of Topeka is contractor on the projects, which have a combined construction cost of \$2.5 million.

Drivers are reminded to obey the signs and flaggers, and to slow down. Persons with questions may contact KDOT Area Engineer Darrin Petrowsky, (620) 901-6557, or Public Affairs Manager Priscilla Petersen, (620) 902-6433.



Project area in yellow

#####

This information can be made available in alternative accessible formats upon request.

For information about obtaining an alternative format, contact the KDOT Division of Communications, 700 SW Harrison St., 2nd Fl West, Topeka, KS 66603-3754, or phone 785-296-3585 (Voice)/Hearing Impaired – 711.

Click below to connect to KDOT's Social Networks:

