

Southeast District Office
411 W. Fourteenth
Chanute, KS 66720-2894



phone: 620-431-1000
fax: 620-431-4406
www.ksdot.org

Julie Lorenz, Secretary

Laura Kelly, Governor

IMMEDIATE RELEASE

March 9, 2021

Contact: Priscilla Petersen, (620) 902-6433; priscilla.petersen@ks.gov

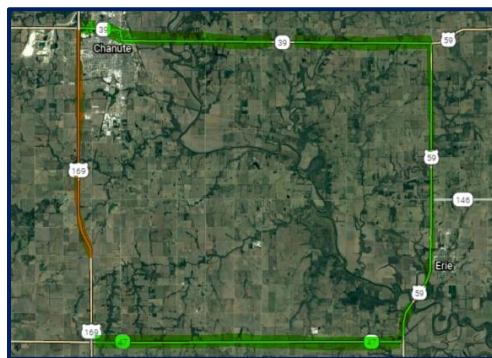
KDOT to begin reconstruction on U.S. 169 next Monday

Monday, March 15, the Kansas Department of Transportation (KDOT) plans to begin a reconstruction project on a 13-mile stretch of U.S. 169. The project area starts approximately three miles north of the U.S. 169/K-47 junction and continues north to end 1.7 miles north of the Neosho-Allen county line.

The first phase of the project will cover U.S. 169 from north of K-47 and continuing north to K-39 at Chanute. Starting March 15, this section will be closed to through traffic. Traffic will follow the signed state route detour on K-47, U.S. 59 and K-39. Following completion of the first phase, this section is expected to reopen in mid-July 2021.

During the second project phase, U.S. 169 will be closed to through traffic from K-39 north to 1.7 miles north of the Neosho-Allen county line. The state route detour for the second phase will be signed on U.S. 54, U.S. 75 and K-39. The second phase is set to begin after the first phase is completed and should be finished by mid-November 2022.

KDOT awarded the \$32.6 million construction contract to Emery Sapp & Sons, Inc., of Kansas City, Mo. Persons with questions may contact Geryd Erbele, (620) 577-7314, or Priscilla Petersen, (620) 902-6433. For updated information about U.S. 169 project and other KDOT projects, go to www.kandrive.org.



U.S. 169 closure in red. State detour in green.

###

This information can be made available in alternative accessible formats upon request.

For information about obtaining an alternative format, contact the KDOT Division of Communications, 700 SW Harrison St., 2nd Fl West, Topeka, KS 66603-3754 or phone 785-296-3585 (Voice)/Hearing Impaired – 711.

Click below to connect to KDOT's Social Networks:

