

Southeast District Office
411 W. Fourteenth
Chanute, KS 66720-2894



phone: 620-431-1000
fax: 620-431-4406
www.ksdot.org

Julie Lorenz, Secretary

Laura Kelly, Governor

IMMEDIATE RELEASE

Nov. 9, 2020

Contact: Priscilla Petersen, (620) 902-6433; priscilla.petersen@ks.gov

U.S. 169 now closed from K-58 north to U.S. 59

The Kansas Department of Transportation (KDOT) has extended the area of the U.S. 169 closure in Anderson County. The closure now begins at the K-58 junction and continues north to the U.S. 59 junction. KDOT expects the closure to remain in effect until August 2021.

KDOT reminds U.S. 169 motorists to use the signed state route detour on U.S. 54 and U.S. 59. County roads are not suitable detour routes. Anderson County roads that have been closed include: 1300, Missouri, Maryland, 1000, 800, 700, 600, 400, Nebraska and Southwest Colony. West Virginia Road is closed in Allen County. These closures can be viewed on the KanDrive traveler information system at www.kandrive.org.

Barricades have been placed at the following locations, with local traffic only allowed:

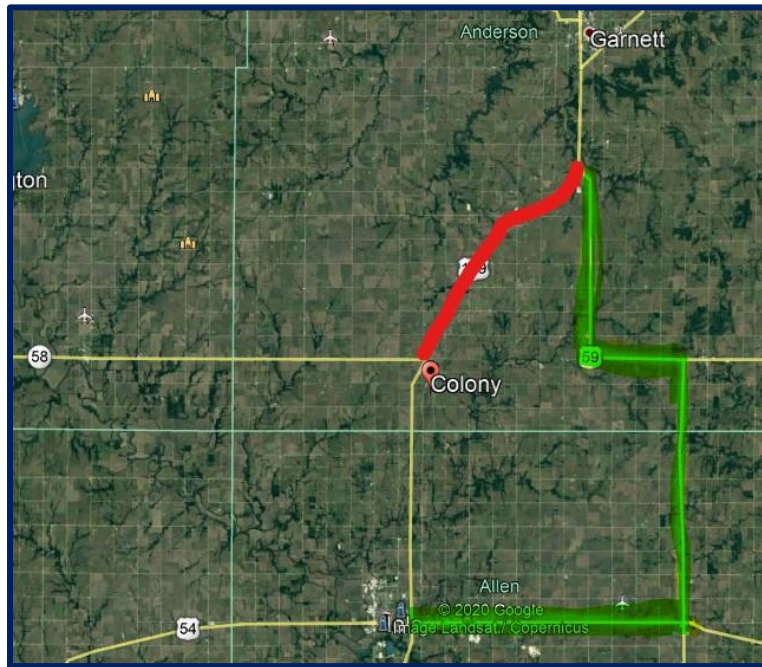
- U.S. 169 at K-58,
- 1000 Road at U.S. 59,
- Maryland Road at U.S. 169,
- 400 Road at U.S. 169,
- 300 Road at U.S. 169.

The state route detour for northbound U.S. 169 traffic: from the U.S. 169/U.S. 54 junction at Iola, travel east on U.S. 54 to the U.S. 54/U.S. 59 junction at Moran, then travel north and west on U.S. 59 to the south U.S. 59/U.S. 169 junction. Southbound U.S. 169 traffic should take the same detour route in the opposite direction.

The highway closure is part of the \$21 million project to reconstruct and rehabilitate 7½ miles of U.S. 169 in Anderson County. Work started in early March on this previously

delayed T-WORKS project. Bettis Asphalt & Construction of Topeka is the primary contractor.

Persons with questions may contact Troy Howard, (785) 443-6116, or Priscilla Petersen, (620) 902-6433.



U.S. 169 closure shown in red

State route detour on U.S. 54 and U.S. 59 shown in green

#####

This information can be made available in alternative accessible formats upon request.

For information about obtaining an alternative format, contact the KDOT Division of Communications, 700 SW Harrison St., 2nd Fl West, Topeka, KS 66603-3754 or phone 785-296-3585 (Voice)/Hearing Impaired – 711.

Click below to connect to KDOT's Social Networks:

