

Southeast District Office
411 W. Fourteenth
Chanute, KS 66720-2894



phone: 620-902-6400
fax: 620-431-4406
www.ksdot.org

Julie Lorenz, Secretary

Laura Kelly, Governor

IMMEDIATE RELEASE

Oct. 5, 2020

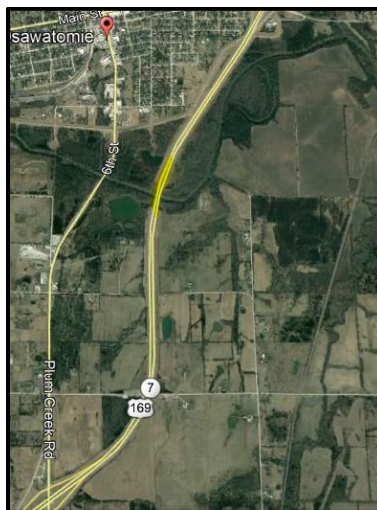
Contact: Priscilla Petersen, (620) 902-6433; priscilla.petersen@ks.gov

U.S. 169 bridge repair begins in Miami County

The Kansas Department of Transportation (KDOT) has started a repair project on the U.S. 169 northbound bridge over Pottawatomie Creek in Miami County. The bridge is approximately 1½ miles north of the K-7 junction.

Activities include replacing the abutment seal at both ends of the bridge, painting the girder ends, and deck patching. U.S. 169 northbound traffic is restricted to one lane at the work zone through mid-November.

KDOT awarded the \$205,442 construction contract to PCI Roads, Topeka. Drivers are reminded to slow down in the work zone. Persons with questions may contact Troy Howard, (785) 433-6116, or Priscilla Petersen, (620) 902-6433.



Project area shown in yellow

#####

This information can be made available in alternative accessible formats upon request.

For information about obtaining an alternative format, contact the KDOT Division of Communications, 700 SW Harrison St., 2nd Fl West, Topeka, KS 66603-3754, or phone 785-296-3585 (Voice)/Hearing Impaired – 711.

Click below to connect to KDOT's Social Networks:

