

Southeast District Office
411 W. Fourteenth
Chanute, KS 66720-2894



phone: 620-902-6400
fax: 620-431-4406
www.ksdot.org

Julie Lorenz, Secretary

Laura Kelly, Governor

IMMEDIATE RELEASE

June 2, 2020

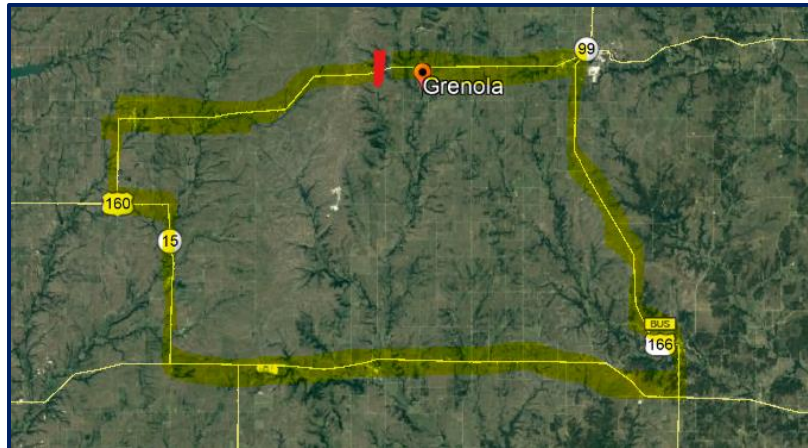
Contact: Priscilla Petersen, (620) 902-6433; priscilla.petersen@ks.gov

U.S. 160 rail crossing to close for repairs

The South Kansas & Oklahoma (SKOL) Railroad plans to close and repair its crossing on U.S. 160 approximately two miles west of Grenola starting Tuesday, June 9, and continuing until Monday, June 15, weather permitting.

Traffic will follow the signed detour on K-99, U.S. 166, K-15 and U.S. 160 during the weeklong closure.

Persons with questions may contact Kansas Department of Transportation Superintendent Marcus Leck, (620) 577-7313, or Public Affairs Manager Priscilla Petersen, (620) 902-6433.



SKOL closure shown in red; detour in yellow.

#####

This information can be made available in alternative accessible formats upon request.

For information about obtaining an alternative format, contact the KDOT Division of Communications, 700 SW Harrison St., 2nd Fl West, Topeka, KS 66603-3754 or phone 785-296-3585 (Voice)/Hearing Impaired – 711.

Click below to connect to KDOT's Social Networks:

