

South Central District Office
500 N. Hendricks
Hutchinson, KS 67504-0769



phone: 620-860-7400
fax: 620-663-1804
www.ksdot.gov

Calvin Reed, Acting Secretary of Transportation

Laura Kelly, Governor

IMMEDIATE RELEASE

March 9, 2023

For more information: Tim Potter

620-860-7389; mobile: 620-727-2278; Tim.Potter@ks.gov

More Reno County road changes coming with K-14 realignment project

Nickerson Road from West 95th Avenue to West 108th Avenue (Rice/Reno county line) is tentatively expected to reopen on March 16 as part of ongoing work on the K-14 realignment project.

At Nickerson Road, ramps leading to the new K-14 alignment will be barricaded to prevent traffic from entering the new highway alignment until it opens as expected in June.

Also, a short section of Riverton Road will permanently close, tentatively expected on March 16, between West 95th and West 108th where Riverton intersects the new alignment.

That same day, West 69th Avenue will permanently close between North Herren Road and North Dean Road where it intersects the new alignment.

The road changes -- northwest of Hutchinson, to the Reno/Rice county line -- are part of changes associated with the new highway alignment.

The Kansas Department of Transportation has already announced that 56th Avenue is tentatively scheduled to reopen on March 16. That portion of 56th Avenue extends from the existing junction with K-14/96 east to Yaggy Road.

The map below shows the March 16 road openings in black and the road closures in white.

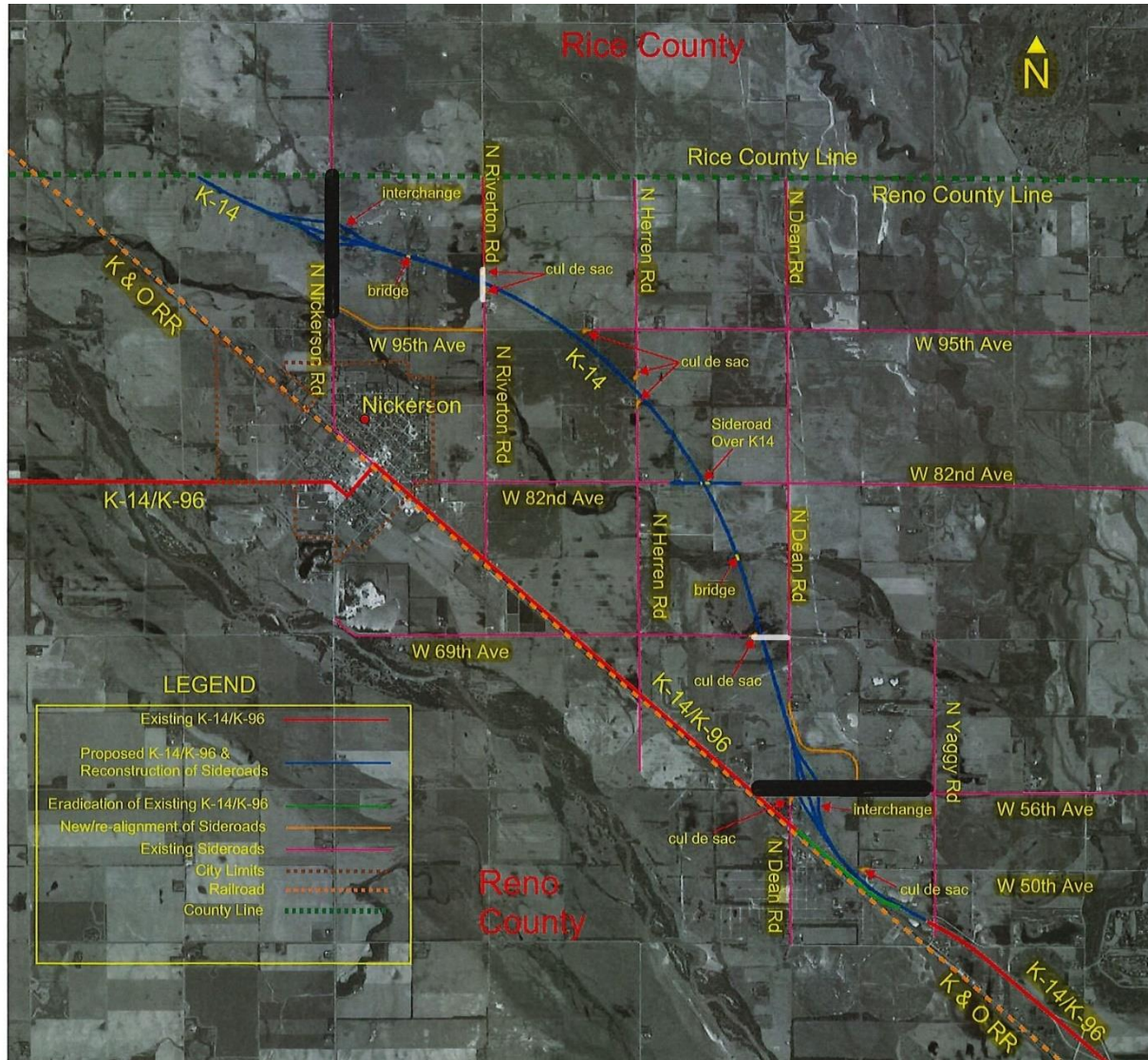
Background: The KDOT realignment project started in the spring of 2021. This a 15-mile, \$81.7 million realignment of K-14. The work stretches from near Hutchinson, to Nickerson, to Sterling. Bob Bergkamp Construction Co. Inc., of Wichita, is the primary contractor.

During the work, traffic will continue to use the existing K-14/96 alignment in Reno and Rice counties.

The Reno County portion of the realignment will be from about 4.5 miles southeast of Nickerson northwest to the Reno/Rice county line. The length is a little over 7 miles.

The Rice County portion of the realignment will be from the Reno/Rice county line to just north of the K-96/Avenue T junction. The length is about 8 miles.

For updated information on other KDOT highway projects and road conditions across the state, go to www.kandrive.org.



###

This information can be made available in alternative accessible formats upon request.
For information about obtaining an alternative format, contact the KDOT Communications Division,
700 SW Harrison St., 2nd Fl West, Topeka, KS 66603-3745 or phone 785-296-3585 (Voice)/Hearing Impaired – 711.

Click below to connect to KDOT's Social Networks:

