

South Central District Office  
500 N. Hendricks  
Hutchinson, KS 67504-0769



phone: 620-860-7400  
fax: 620-663-1804  
[www.ksdot.gov](http://www.ksdot.gov)

Calvin Reed, Secretary of Transportation

Laura Kelly, Governor

## IMMEDIATE RELEASE

July 27, 2023

For more information: Tim Potter

620-860-7389; mobile: 620-727-2278; [Tim.Potter@ks.gov](mailto:Tim.Potter@ks.gov)

### **Work is set on U.S. 56 in Edwards, Pawnee counties**

Resurfacing will start soon on U.S. 56 in Edwards and Pawnee counties -- in two projects covering 30 miles and totalling about \$8.7 million.

The two U.S. 56 projects in Edwards and Pawnee counties are expected to begin around Aug. 7 and be completed around late September. The work is expected to start in Edwards County and move into Pawnee County.

During the projects, traffic will be controlled by flaggers and a pilot car, and motorists should expect to slow down and stop and face delays of up to 15 minutes.

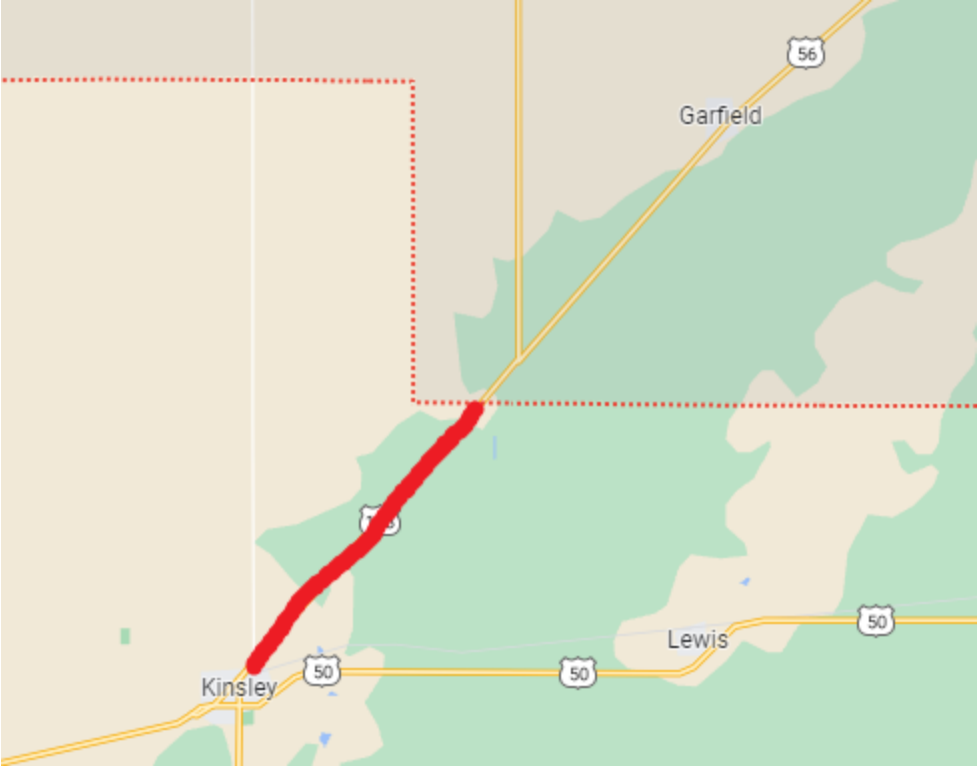
Both projects involve a mill and hot-mix-asphalt overlay. Here are the stretches where the work will occur:

- U.S. 56 in Edwards County: from the east city limits of Kinsley to the Edwards/Pawnee county line. The length is almost 7 miles.
- U.S. 56 in Pawnee County: from the Edwards/Pawnee county line to the west city limits of Larned and from the east city limits of Larned to the west city limits of Pawnee Rock. The length is almost 23 miles.

Venture Corp., of Great Bend, is the primary contractor for the two projects: the \$2,067,678 project in Edwards County and the \$6,652,017 project in Pawnee County.

**The two maps below show the approximate project locations.**

For updated information on these and other KDOT highway projects and road conditions across the state, go to [www.kandrive.org](http://www.kandrive.org).





###

This information can be made available in alternative accessible formats upon request.

For information about obtaining an alternative format, contact the KDOT Communications Division, 700 SW Harrison St., 2<sup>nd</sup> Fl West, Topeka, KS 66603-3745 or phone 785-296-3585 (Voice)/Hearing Impaired – 711.

Click below to connect to KDOT's Social Networks:

