

South Central District Office
500 N. Hendricks
Hutchinson, KS 67504-0769



phone: 620-663-3361
fax: 620-663-1804
www.ksdot.org

Julie Lorenz, Secretary

Laura Kelly, Governor

IMMEDIATE RELEASE

May 13, 2022

For more information: Tim Potter

620-860-7389; mobile: 620-727-2278; Tim.Potter@ks.gov

Part of 18th St. near Sterling temporarily closing for K-14 work

A portion of 18th Street east of Sterling is expected to be closed for several hours on Wednesday, May 18, as part of ongoing work on the K-14 realignment.

The part being closed is on 18th Street between Avenue V and Avenue U, in Rice County.

The closure is expected to be from around 7 a.m. that Wednesday until in the afternoon.

The temporary closing will allow workers to remove a collapsed pipe.

The first map below shows the part of 18th Street to be closed, marked in red.

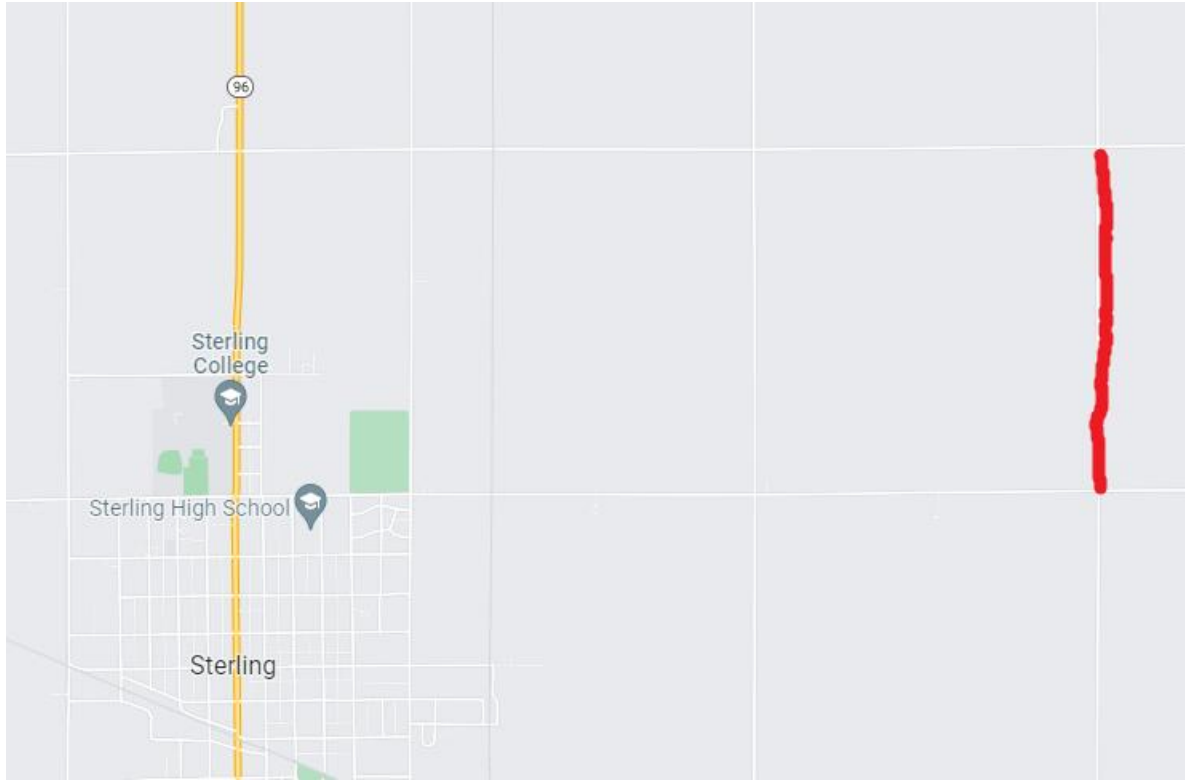
The second map below shows a diagram of the new K-14 alignment in Reno and Rice counties.

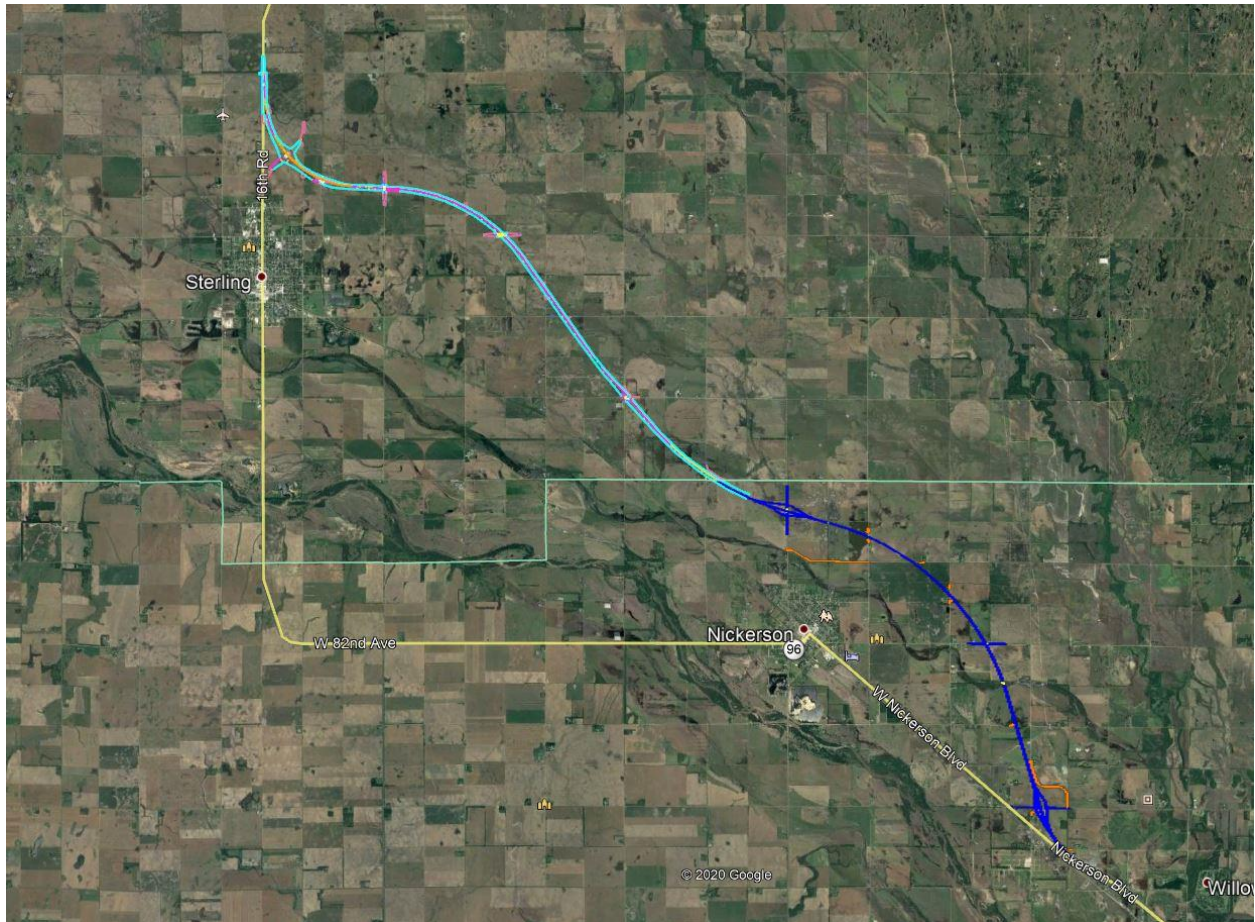
Background: This Kansas Department of Transportation realignment project started in the spring of 2021. This a 15-mile, \$81.7 million realignment of K-14. The work stretches from Hutchinson, to Nickerson, to Sterling. The project is expected to be completed by June 16, 2023. Bob Bergkamp Construction Co. Inc., of Wichita, is the primary contractor.

During the work, traffic will continue to use the existing K-14/96 alignment in Reno and Rice counties.

The Reno County portion of the realignment will be from about 4.5 miles southeast of Nickerson northwest to the Reno/Rice county line. The length is a little over 7 miles.

The Rice County portion of the realignment will be from the Reno/Rice county line to just north of the K-96/Avenue T junction. The length is about 8 miles.





###

This information can be made available in alternative accessible formats upon request.
For information about obtaining an alternative format, contact the KDOT Communications Division,
700 SW Harrison St., 2nd Fl West, Topeka, KS 66603-3754 or phone 785-296-3585 (Voice)/Hearing Impaired – 711.

Click below to connect to KDOT's Social Networks:

