

Northeast District Office
121 S.W. 21st Street
Topeka, KS 66612-1429



phone: 785-296-3881
fax: 785-296-3720
www.ksdot.gov

Calvin Reed, Secretary of Transportation

Laura Kelly, Governor

IMMEDIATE RELEASE

May 7, 2024

For more information:

Kate Craft

Kate.Craft@ks.gov

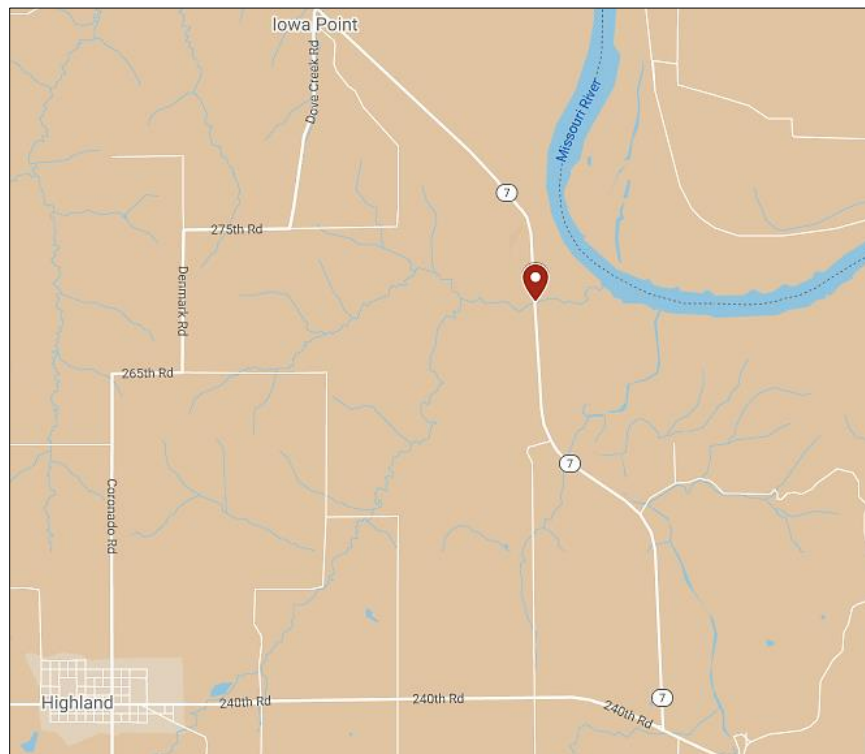
K-7 bridge repairs starting tomorrow in Doniphan County

Kansas Department of Transportation maintenance crews will begin bridge deck repair work tomorrow, May 8, on K-7 in Doniphan County. The Mission Creek bridge is approximately 7 miles south of White Cloud.

The bridge will be reduced to one lane and controlled by temporary traffic signals until early June, conditions permitting. Drivers should plan for delays of up to 10 minutes.

There will also be an 11-foot width restriction through the work zone.

KDOT urges all motorists to be alert and obey the warning signs when approaching and driving through a highway work zone. To stay aware of highway construction projects across Kansas, go to www.KanDrive.gov or call 5-1-1.



###

This information can be made available in alternative accessible formats upon request. For information about obtaining an alternative format, contact the KDOT Division of Communications, 700 SW Harrison St., 2nd Fl. West, Topeka, KS 66603-3745 or phone 785-296-3585 (Voice)/Hearing Impaired – 711.

Click below to connect to KDOT's Social Networks:

